

Product datasheet for **TA383050**

UBQLNL Rabbit Polyclonal Antibody

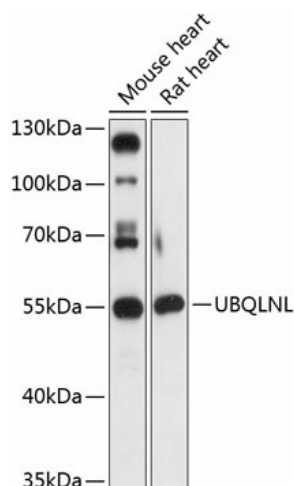
Product data:

Product Type:	Primary Antibodies
Applications:	ICC/IF, WB
Recommended Dilution:	WB,1:500 - 1:2000 IF,1:50 - 1:200
Reactivity:	Human, Mouse, Rat
Modifications:	Unmodified
Host:	Rabbit
Isotype:	IgG
Clonality:	Polyclonal
Immunogen:	Recombinant fusion protein containing a sequence corresponding to amino acids 176-475 of human UBQLNL (NP_659490.4).
Formulation:	Buffer: PBS with 0.02% sodium azide,50% glycerol,pH7.3.
Concentration:	lot specific
Purification:	Affinity purification
Conjugation:	Unconjugated
Storage:	Store at -20°C. Avoid freeze / thaw cycles.
Stability:	Shelf life: one year from despatch.
Predicted Protein Size:	29kDa/52kDa
Gene Name:	ubiquilin-like
Database Link:	Entrez Gene 143630 Human Q8IYU4
Synonyms:	MGC20470; MGC26958; ubiquilin-like

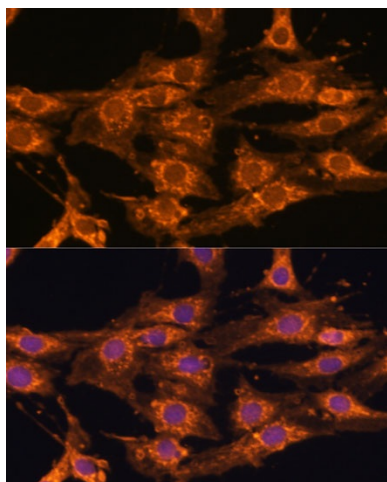


[View online »](#)

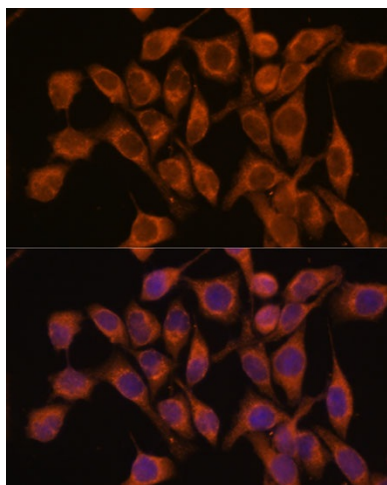
Product images:



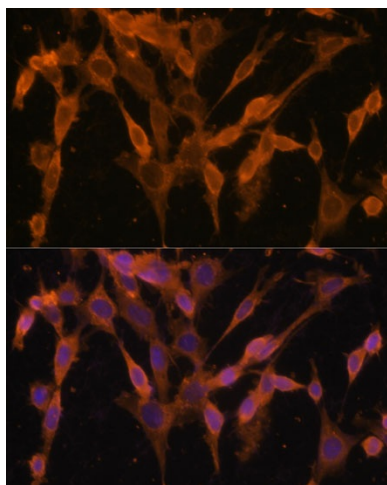
Western blot analysis of extracts of various cell lines, using UBQLNL antibody (TA383050) at 1:3000 dilution. | Secondary antibody: HRP Goat Anti-Rabbit IgG (H+L) at 1:10000 dilution. | Lysates/proteins: 25ug per lane. | Blocking buffer: 3% nonfat dry milk in TBST. | Detection: ECL Basic Kit . | Exposure time: 30s.



Immunofluorescence analysis of C6 cells using UBQLNL antibody (TA383050) at dilution of 1:100. Blue: DAPI for nuclear staining.



Immunofluorescence analysis of HeLa cells using UBQLNL antibody (TA383050) at dilution of 1:100. Blue: DAPI for nuclear staining.



Immunofluorescence analysis of NIH/3T3 cells using UBQLNL antibody (TA383050) at dilution of 1:100. Blue: DAPI for nuclear staining.