

Product datasheet for **TA383025**

UBE2Q2 Rabbit Polyclonal Antibody

Product data:

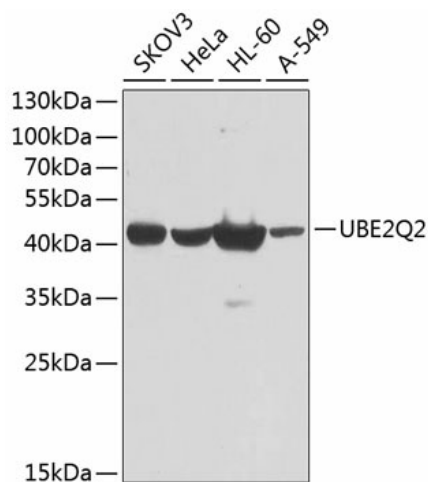
Product Type:	Primary Antibodies
Applications:	WB
Recommended Dilution:	WB,1:500 - 1:2000 IF,1:50 - 1:100
Reactivity:	Human, Mouse
Modifications:	Unmodified
Host:	Rabbit
Isotype:	IgG
Clonality:	Polyclonal
Immunogen:	Recombinant fusion protein containing a sequence corresponding to amino acids 1-150 of human UBE2Q2 (NP_775740.1).
Formulation:	Buffer: PBS with 0.02% sodium azide,50% glycerol,pH7.3.
Concentration:	lot specific
Purification:	Affinity purification
Conjugation:	Unconjugated
Storage:	Store at -20°C. Avoid freeze / thaw cycles.
Stability:	Shelf life: one year from despatch.
Predicted Protein Size:	36kDa/38kDa/40kDa/42kDa
Gene Name:	ubiquitin conjugating enzyme E2 Q2
Database Link:	Entrez Gene 92912 Human Q8WVN8
Background:	Ube2Q2 is an E2 enzyme, which is part of the E1, E2, and E3 cascade responsible for ubiquitination of protein substrates. Ube2Q2 is thought to play a key role in regulating mitotic stages in cells. Its discovery was in connection with an arrest in the mitotic cell cycle. Inactivating this E2 prohibits the cell from continuing on past prophase. In cases of head and neck squamous cell carcinoma, there is an elevated level of Ube2Q2 in the cancerous tissues. Also when the expression levels decreased, the cancerous cells were found to have a resistance to chemotherapeutic agents.



[View online »](#)

Synonyms: DKFZp762C143; LOC92912

Product images:



Western blot analysis of extracts of various cell lines, using UBE2Q2 antibody (TA383025) at 1:1000 dilution. | Secondary antibody: HRP Goat Anti-Rabbit IgG (H+L) at 1:10000 dilution. | Lysates/proteins: 25ug per lane. | Blocking buffer: 3% nonfat dry milk in TBST. | Detection: ECL Basic Kit . | Exposure time: 60s.