

Product datasheet for **TA383024S**

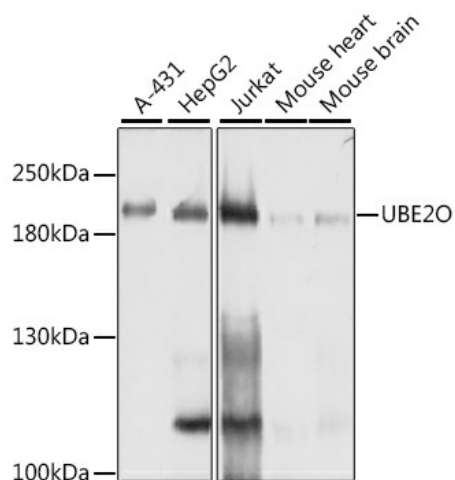
E2 230K (UBE2O) Rabbit Polyclonal Antibody

Product data:

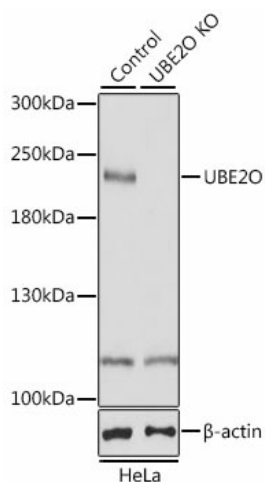
Product Type:	Primary Antibodies
Applications:	ELISA, ICC/IF, IP, WB
Recommended Dilution:	WB, 1:1000 - 1:4000 IF/ICC, 1:50 - 1:200 IP, 0.5µg-4µg antibody for 200µg-400µg extracts of whole cells ELISA, Recommended starting concentration is 1 µg/mL. Please optimize the concentration based on your specific assay requirements.
Reactivity:	Human, Mouse, Rat
Modifications:	Unmodified
Host:	Rabbit
Isotype:	IgG
Clonality:	Polyclonal
Formulation:	Buffer: PBS with 0.02% sodium azide, 50% glycerol, pH7.3.
Concentration:	lot specific
Purification:	Affinity purification
Conjugation:	Unconjugated
Storage:	Store at -20°C. Avoid freeze / thaw cycles.
Stability:	Shelf life: one year from despatch.
Predicted Protein Size:	141kDa
Gene Name:	ubiquitin conjugating enzyme E2 O
Database Link:	Entrez Gene 63893 Human Q9C0C9
Background:	Enables ubiquitin conjugating enzyme activity and ubiquitin protein ligase activity. Involved in positive regulation of BMP signaling pathway; protein ubiquitination; and retrograde transport, endosome to Golgi. Located in cytoplasm and nuclear body.
Synonyms:	E2-230K; FLJ12878; KIAA1734



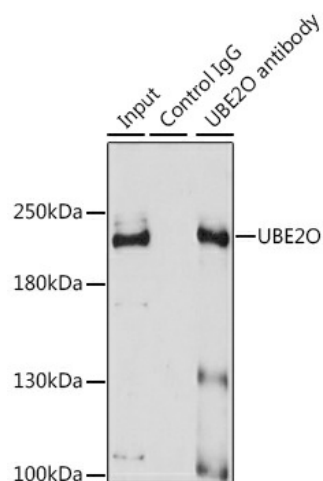
[View online »](#)

Product images:


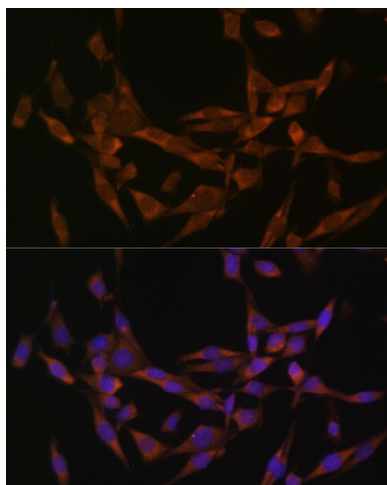
Western blot analysis of various lysates using [KO Validated] UBE2O Rabbit pAb (TA383024) at 1:1000 dilution.
 Secondary antibody: HRP-conjugated Goat anti-Rabbit IgG (H+L) (AS014) at 1:10000 dilution.
 Lysates/proteins: 25µg per lane.
 Blocking buffer: 3% nonfat dry milk in TBST.
 Detection: ECL Basic Kit (RM00020).
 Exposure time: 1s.



Western blot analysis of lysates from wild type (WT) and UBE2O knockout (KO) HeLa cells



Immunoprecipitation analysis of 200 µg extracts of A-431 cells using 3 µg UBE2O antibody ([TA383024]). Western blot was performed from the immunoprecipitate using UBE2O antibody ([TA383024]) at a dilution of 1:1000.



Immunofluorescence analysis of HeLa cells using [KO Validated] UBE2O Rabbit pAb ([TA383024]) at dilution of 1:100 (40x lens). Secondary antibody: Cy3-conjugated Goat anti-Rabbit IgG (H+L) (AS007) at 1:500 dilution. Blue: DAPI for nuclear staining.