

Product datasheet for **TA383010**

UBE2E2 Rabbit Polyclonal Antibody

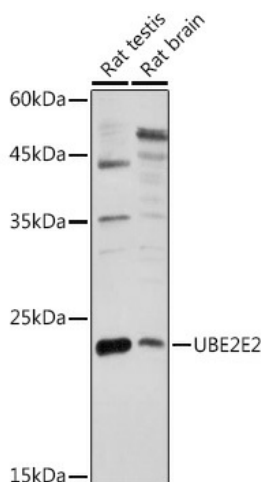
Product data:

Product Type:	Primary Antibodies
Applications:	WB
Recommended Dilution:	WB,1:500 - 1:2000
Reactivity:	Mouse, Rat
Modifications:	Unmodified
Host:	Rabbit
Isotype:	IgG
Clonality:	Polyclonal
Immunogen:	Recombinant fusion protein containing a sequence corresponding to amino acids 1-201 of human UBE2E2 (NP_689866.1).
Formulation:	Buffer: PBS with 0.02% sodium azide,50% glycerol,pH7.3.
Concentration:	lot specific
Purification:	Affinity purification
Conjugation:	Unconjugated
Storage:	Store at -20°C. Avoid freeze / thaw cycles.
Stability:	Shelf life: one year from despatch.
Predicted Protein Size:	22kDa
Gene Name:	ubiquitin conjugating enzyme E2 E2
Database Link:	Q96LR5
Background:	Ube2E2 is an E2 enzyme, which is part of the E1, E2, and E3 cascade responsible for ubiquitination of protein substrates. It shares 96% identical amino acid sequence with Ube2E1 and Ube2E3 with the exception of the N-terminal extension that has little in common with the other two E2s. Ube2E2 interacts with ARA54 and RNF8. The RNF8/ Ube2E2 interaction is found to catalyze K48-linked poly-ubiquitination. Ube2E2 may play a role in ubiquitination and subsequent proteasomal degradation of the E3 Ub ligase Parkin.
Synonyms:	FLJ25157; OTTHUMP00000161048; OTTHUMP00000208342; UBCH8



[View online »](#)

Product images:



Western blot analysis of extracts of various cell lines, using UBE2E2 antibody (TA383010) at 1:1000 dilution. | Secondary antibody: HRP Goat Anti-Rabbit IgG (H+L) at 1:10000 dilution. | Lysates/proteins: 25ug per lane. | Blocking buffer: 3% nonfat dry milk in TBST. | Detection: ECL Enhanced Kit . | Exposure time: 180s.