

Product datasheet for **TA383008S**

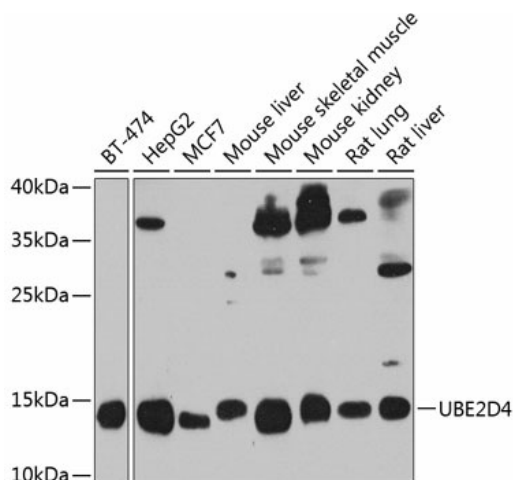
UBE2D4 Rabbit Polyclonal Antibody

Product data:

Product Type:	Primary Antibodies
Applications:	ELISA, WB
Recommended Dilution:	WB, 1:500 - 1:2000 ELISA, Recommended starting concentration is 1 µg/mL. Please optimize the concentration based on your specific assay requirements.
Reactivity:	Human, Mouse, Rat
Modifications:	Unmodified
Host:	Rabbit
Isotype:	IgG
Clonality:	Polyclonal
Formulation:	Buffer: PBS with 0.02% sodium azide, 50% glycerol, pH 7.3.
Concentration:	lot specific
Purification:	Affinity purification
Conjugation:	Unconjugated
Storage:	Store at -20°C. Avoid freeze / thaw cycles.
Stability:	Shelf life: one year from despatch.
Predicted Protein Size:	17kDa
Gene Name:	ubiquitin conjugating enzyme E2 D4 (putative)
Database Link:	Entrez Gene 51619 Human Q9Y2X8
Background:	Enables ubiquitin conjugating enzyme activity. Involved in protein polyubiquitination. Acts upstream of or within protein ubiquitination. Predicted to be part of ubiquitin ligase complex. Predicted to be active in nucleus.
Synonyms:	HBUCE1


[View online »](#)

Product images:



Western blot analysis of various lysates using UBE2D4 Rabbit pAb (TA383008S) at 1:1000 dilution.

Secondary antibody: HRP-conjugated Goat anti-Rabbit IgG (H+L) (AS014) at 1:10000 dilution.

Lysates/proteins: 25µg per lane.

Blocking buffer: 3% nonfat dry milk in TBST.

Detection: ECL Enhanced Kit (RM00021).

Exposure time: 30s.