

Product datasheet for **TA383008**

UBE2D4 Rabbit Polyclonal Antibody

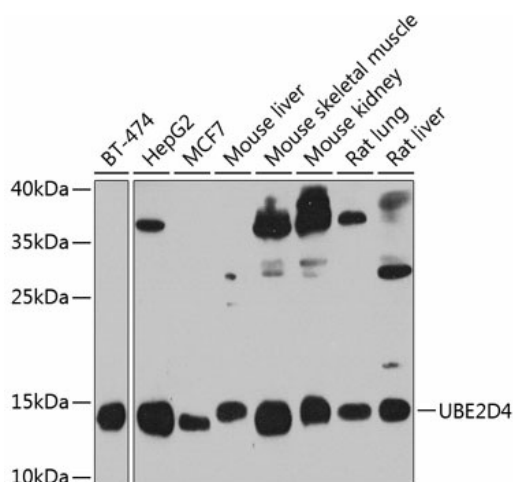
Product data:

Product Type:	Primary Antibodies
Applications:	WB
Recommended Dilution:	WB,1:500 - 1:2000
Reactivity:	Human, Mouse, Rat
Modifications:	Unmodified
Host:	Rabbit
Isotype:	IgG
Clonality:	Polyclonal
Immunogen:	Recombinant fusion protein containing a sequence corresponding to amino acids 1-147 of human UBE2D4 (NP_057067.1).
Formulation:	Buffer: PBS with 0.02% sodium azide,50% glycerol,pH7.3.
Concentration:	lot specific
Purification:	Affinity purification
Conjugation:	Unconjugated
Storage:	Store at -20°C. Avoid freeze / thaw cycles.
Stability:	Shelf life: one year from despatch.
Predicted Protein Size:	16kDa
Gene Name:	ubiquitin conjugating enzyme E2 D4 (putative)
Database Link:	Entrez Gene 51619 Human Q9Y2X8
Background:	Ube2D4 is an E2 enzyme, which is part of the E1, E2, and E3 cascade responsible for ubiquitination of protein substrates. Ube2D4 has been linked to cadmium toxicity. It might also play a role in LDL cholesterol receptor ubiquitination in an Idol-dependent fashion.
Synonyms:	HBUCE1



[View online »](#)

Product images:



Western blot analysis of extracts of various cell lines, using UBE2D4 antibody (TA383008) at 1:1000 dilution. | Secondary antibody: HRP Goat Anti-Rabbit IgG (H+L) at 1:10000 dilution. | Lysates/proteins: 25ug per lane. | Blocking buffer: 3% nonfat dry milk in TBST. | Detection: ECL Enhanced Kit. | Exposure time: 30s.