

Product datasheet for **TA382997**

UBB Rabbit Polyclonal Antibody

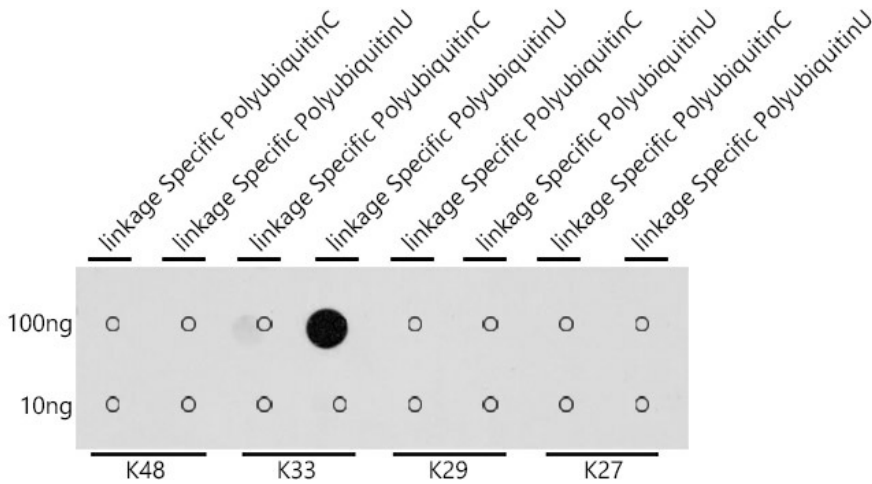
Product data:

Product Type:	Primary Antibodies
Applications:	WB
Recommended Dilution:	WB,1:500 - 1:2000 DB,1:500 - 1:2000
Reactivity:	Human, Mouse, Rat
Modifications:	K33-linkage Specific Polyubiquitin
Host:	Rabbit
Isotype:	IgG
Clonality:	Polyclonal
Immunogen:	A synthetic peptide corresponding to a sequence containing polyubiquitinated protein (K33 linkage).
Formulation:	Buffer: PBS with 0.02% sodium azide,50% glycerol,pH7.3.
Concentration:	lot specific
Purification:	Affinity purification
Conjugation:	Unconjugated
Storage:	Store at -20°C. Avoid freeze / thaw cycles.
Stability:	Shelf life: one year from despatch.

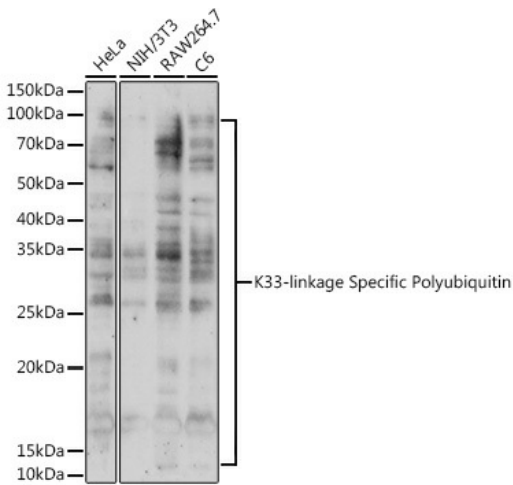


[View online »](#)

Product images:



Dot-blot analysis of all sorts of peptides using K33-linkage Specific Polyubiquitin antibody (TA382997) at 1:1000 dilution.



Western blot analysis of extracts of various cell lines, using K33-linkage Specific Polyubiquitin Rabbit pAb (TA382997) at 1:500 dilution. |Secondary antibody: HRP Goat Anti-Rabbit IgG (H+L) at 1:10000 dilution. |Lysates/proteins: 25ug per lane. |Blocking buffer: 3% nonfat dry milk in TBST. |Detection: ECL Enhanced Kit . |Exposure time: 90s.