

Product datasheet for **TA382996S**

UBB Rabbit Polyclonal Antibody

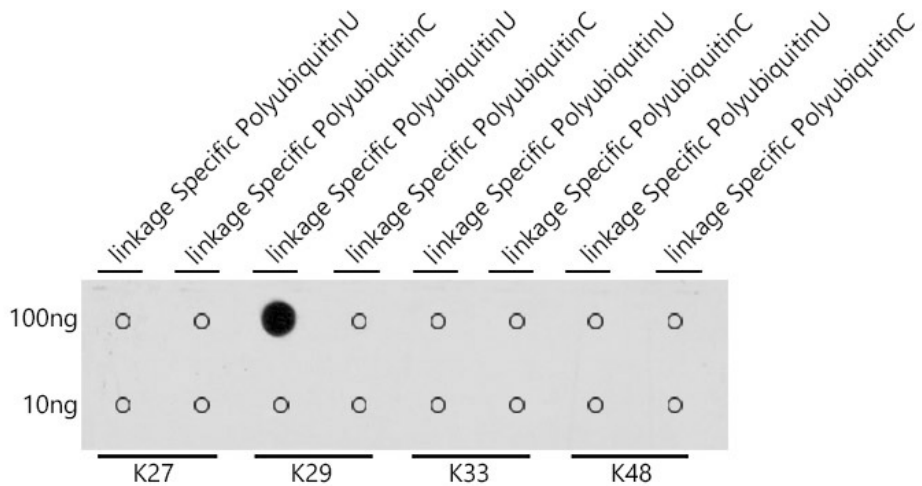
Product data:

Product Type:	Primary Antibodies
Applications:	Dot, ELISA, WB
Recommended Dilution:	WB, 1:500 - 1:2000 DB, 1:500 - 1:1000 ELISA, Recommended starting concentration is 1 µg/mL. Please optimize the concentration based on your specific assay requirements.
Reactivity:	Human, Mouse, Rat, Other (Wide Range)
Modifications:	K29-linkage Specific Polyubiquitin
Host:	Rabbit
Isotype:	IgG
Clonality:	Polyclonal
Formulation:	Buffer: PBS with 0.02% sodium azide, 50% glycerol, pH 7.3.
Concentration:	lot specific
Purification:	Affinity purification
Conjugation:	Unconjugated
Storage:	Store at -20°C. Avoid freeze / thaw cycles.
Stability:	Shelf life: one year from despatch.
Background:	Polyubiquitin chains regulate diverse cellular processes through the ability of ubiquitin to form chains of eight different linkage types. When attached to a target protein, have different functions depending on the Lys residue of the ubiquitin that is linked. K29-linked ubiquitination is involved in different kinds of cellular proteotoxic stress response as well as cell cycle regulation. In particular, K29-linked ubiquitination is enriched in the midbody and downregulation of the K29-linked ubiquitination signal arrests cells in G1/S phase.

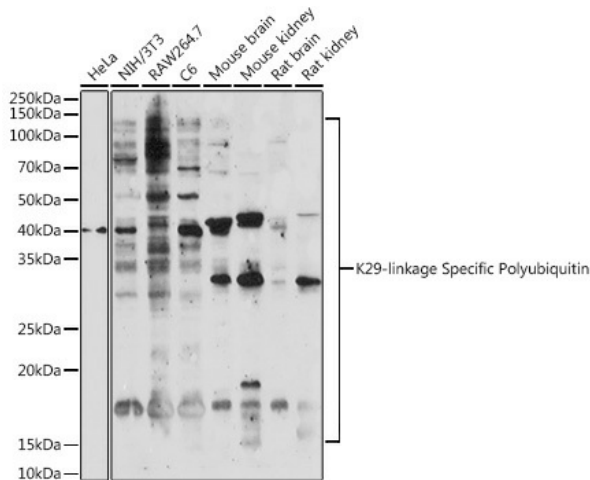


[View online »](#)

Product images:



Dot-blot analysis of all sorts of peptides using K29-linkage Specific Polyubiquitin antibody ([TA382996]) at 1:1000 dilution.



Western blot analysis of various lysates using K29-linkage Specific Polyubiquitin Rabbit pAb ([TA382996]) at 1:500 dilution. Secondary antibody: HRP-conjugated Goat anti-Rabbit IgG (H+L) (AS014) at 1:10000 dilution. Lysates/proteins: 25µg per lane. Blocking buffer: 3% nonfat dry milk in TBST. Detection: ECL Enhanced Kit (RM00021). Exposure time: 90s.