

Product datasheet for **TA382992**

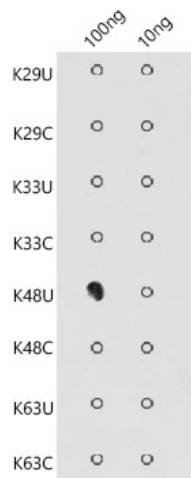
UBB Rabbit Polyclonal Antibody

Product data:

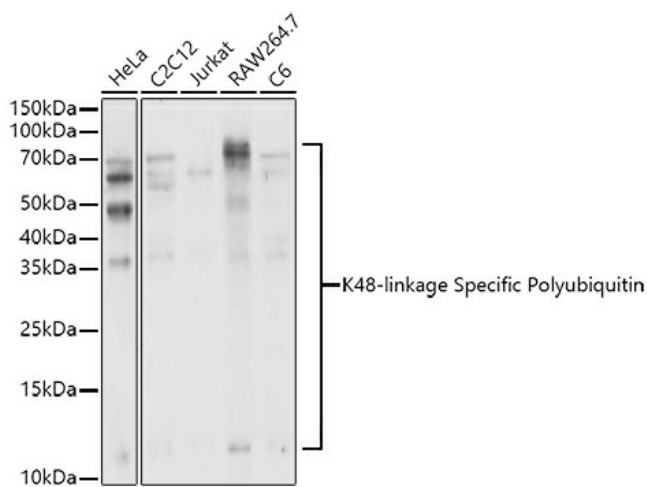
Product Type:	Primary Antibodies
Applications:	WB
Recommended Dilution:	WB,1:500 - 1:2000 DB,1:500 - 1:2000
Reactivity:	Human, Mouse, Rat, Other (Wide Range)
Modifications:	K48-linkage Specific Polyubiquitin
Host:	Rabbit
Isotype:	IgG
Clonality:	Polyclonal
Immunogen:	A synthetic peptide corresponding to a sequence containing polyubiquitinated protein (K48 linkage).
Formulation:	Buffer: PBS with 0.02% sodium azide,50% glycerol,pH7.3.
Concentration:	lot specific
Purification:	Affinity purification
Conjugation:	Unconjugated
Storage:	Store at -20°C. Avoid freeze / thaw cycles.
Stability:	Shelf life: one year from despatch.



[View online »](#)

Product images:


Dot-blot analysis of all sorts of peptides using K48-linkage Specific Polyubiquitin antibody (TA382992) at 1:1000 dilution.



Western blot analysis of extracts of various cell lines, using K48-linkage Specific Polyubiquitin antibody (TA382992) at 1:1000 dilution. | Secondary antibody: HRP Goat Anti-Rabbit IgG (H+L) at 1:10000 dilution. | Lysates/proteins: 25ug per lane. | Blocking buffer: 3% nonfat dry milk in TBST. | Detection: ECL Basic Kit . | Exposure time: 180s.