

Product datasheet for **TA382988S**

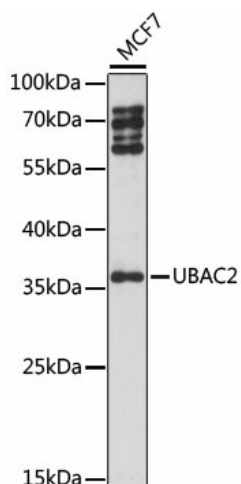
UBAC2 Rabbit Polyclonal Antibody

Product data:

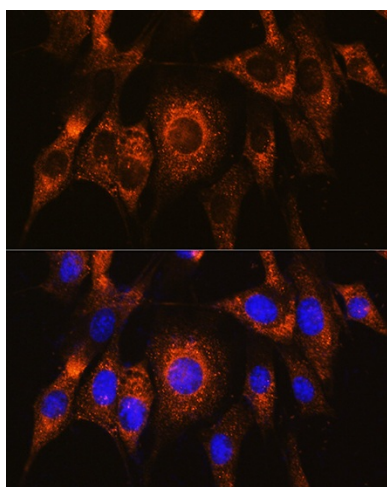
Product Type:	Primary Antibodies
Applications:	ELISA, ICC/IF, WB
Recommended Dilution:	WB, 1:500 - 1:2000 IF/ICC, 1:50 - 1:200 ELISA, Recommended starting concentration is 1 µg/mL. Please optimize the concentration based on your specific assay requirements.
Reactivity:	Human, Mouse, Rat
Modifications:	Unmodified
Host:	Rabbit
Isotype:	IgG
Clonality:	Polyclonal
Formulation:	Buffer: PBS with 0.02% sodium azide, 50% glycerol, pH 7.3.
Concentration:	lot specific
Purification:	Affinity purification
Conjugation:	Unconjugated
Storage:	Store at -20°C. Avoid freeze / thaw cycles.
Stability:	Shelf life: one year from despatch.
Predicted Protein Size:	39kDa
Gene Name:	UBA domain containing 2
Database Link:	Entrez Gene 337867 Human Q8NBM4
Background:	Involved in negative regulation of canonical Wnt signaling pathway and negative regulation of retrograde protein transport, ER to cytosol. Acts upstream of or within protein localization to endoplasmic reticulum. Located in endoplasmic reticulum.
Synonyms:	FLJ26351; FLJ30001; FLJ30548; FLJ42413; MGC90487; PHGDHL1; RP11-178C10.1


[View online »](#)

Product images:



Western blot analysis of lysates from MCF7 cells



Immunofluorescence analysis of NIH/3T3 cells using UBAC2 Rabbit pAb ([TA382988]) at dilution of 1:100. Secondary antibody: Cy3-conjugated Goat anti-Rabbit IgG (H+L) (AS007) at 1:500 dilution. Blue: DAPI for nuclear staining.