

## Product datasheet for **TA382982**

### UBA1 Rabbit Polyclonal Antibody

#### Product data:

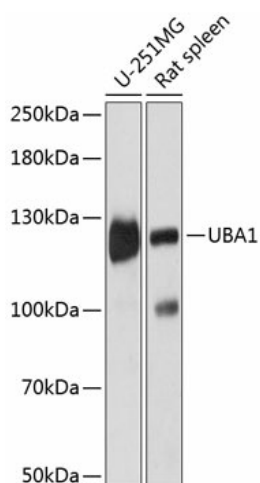
Product Type:	Primary Antibodies
Applications:	ICC/IF, IHC, WB
Recommended Dilution:	WB,1:500 - 1:2000 IHC,1:50 - 1:200 IF,1:50 - 1:200
Reactivity:	Human, Mouse, Rat
Modifications:	Unmodified
Host:	Rabbit
Isotype:	IgG
Clonality:	Polyclonal
Immunogen:	Recombinant fusion protein containing a sequence corresponding to amino acids 300-600 of human UBA1 (NP_695012.1).
Formulation:	Buffer: PBS with 0.02% sodium azide,50% glycerol,pH7.3.
Concentration:	lot specific
Purification:	Affinity purification
Conjugation:	Unconjugated
Storage:	Store at -20°C. Avoid freeze / thaw cycles.
Stability:	Shelf life: one year from despatch.
Predicted Protein Size:	113kDa/117kDa
Gene Name:	ubiquitin like modifier activating enzyme 1
Database Link:	<a href="#">Entrez Gene 7317 Human P22314</a>
Background:	The protein encoded by this gene catalyzes the first step in ubiquitin conjugation to mark cellular proteins for degradation. This gene complements an X-linked mouse temperature-sensitive defect in DNA synthesis, and thus may function in DNA repair. It is part of a gene cluster on chromosome Xp11.23. Alternatively spliced transcript variants that encode the same protein have been described.



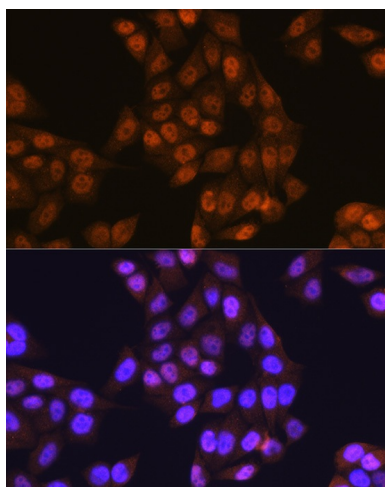
[View online »](#)

Synonyms: A1S9; A1S9T; A1ST; AMCX1; GXP1; MGC4781; SMAX2; UBA1A; UBE1; UBE1X

### Product images:



Western blot analysis of extracts of various cell lines, using UBA1 antibody (TA382982) at 1:3000 dilution. | Secondary antibody: HRP Goat Anti-Rabbit IgG (H+L) at 1:10000 dilution. | Lysates/proteins: 25ug per lane. | Blocking buffer: 3% nonfat dry milk in TBST. | Detection: ECL Basic Kit. | Exposure time: 5s.



Immunofluorescence analysis of HeLa cells using UBA1 Rabbit pAb (TA382982) at dilution of 1:100 (40x lens). Blue: DAPI for nuclear staining.