

## Product datasheet for **TA382955**

### TXN Rabbit Polyclonal Antibody

#### Product data:

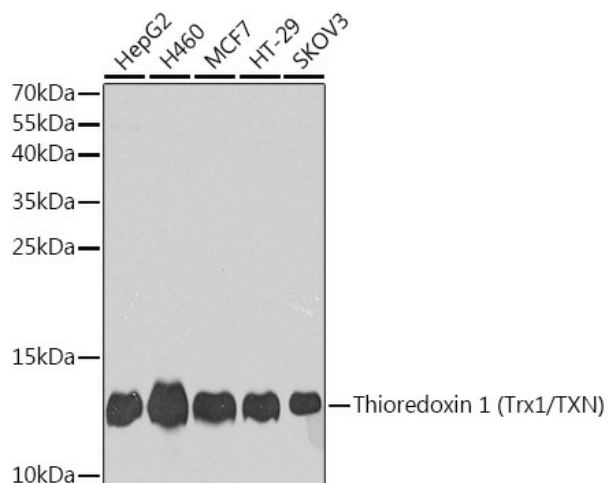
Product Type:	Primary Antibodies
Applications:	ICC/IF, IHC, WB
Recommended Dilution:	WB,1:500 - 1:2000 IHC,1:50 - 1:200 IF,1:50 - 1:200
Reactivity:	Human, Mouse, Rat
Modifications:	Unmodified
Host:	Rabbit
Isotype:	IgG
Clonality:	Polyclonal
Immunogen:	A synthetic peptide corresponding to a sequence within amino acids 20 to the C-terminus of human Thioredoxin 1 (Trx1/Thioredoxin 1 (Trx1/TXN)) (NP_003320.2).
Formulation:	Buffer: PBS with 0.02% sodium azide,50% glycerol,pH7.3.
Concentration:	lot specific
Purification:	Affinity purification
Conjugation:	Unconjugated
Storage:	Store at -20°C. Avoid freeze / thaw cycles.
Stability:	Shelf life: one year from despatch.
Predicted Protein Size:	9kDa/11kDa
Gene Name:	thioredoxin
Database Link:	<a href="#">Entrez Gene 7295 Human P10599</a>
Background:	The protein encoded by this gene acts as a homodimer and is involved in many redox reactions. The encoded protein is active in the reversible S-nitrosylation of cysteines in certain proteins, which is part of the response to intracellular nitric oxide. This protein is found in the cytoplasm. Two transcript variants encoding different isoforms have been found for this gene.



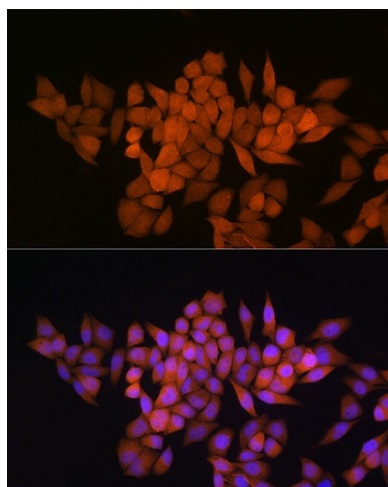
[View online »](#)

Synonyms: ADF; DKFZp686B1993; MGC61975; SASP; thioredoxin; TRDX; TRX; TRX1

### Product images:



Western blot analysis of extracts of various cell lines, using Thioredoxin 1 (Trx1/Thioredoxin 1 (Trx1/TXN)) antibody (TA382955) at 1:1000 dilution. | Secondary antibody: HRP Goat Anti-Rabbit IgG (H+L) at 1:10000 dilution. | Lysates/proteins: 25ug per lane. | Blocking buffer: 3% nonfat dry milk in TBST. | Detection: ECL Basic Kit. | Exposure time: 90s.



Immunofluorescence analysis of HeLa cells using Thioredoxin 1 (Trx1/Thioredoxin 1 (Trx1/TXN)) Rabbit pAb (TA382955) at dilution of 1:100 (40x lens). Blue: DAPI for nuclear staining.