

## Product datasheet for **TA382952**

### Alpha Taxilin (TXLNA) Rabbit Polyclonal Antibody

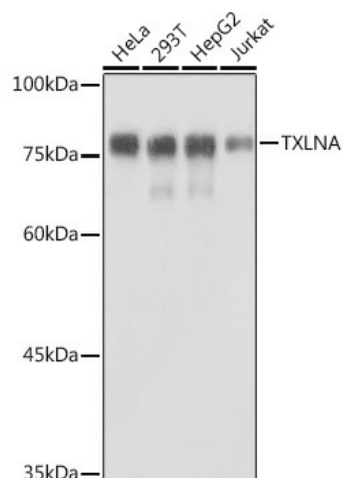
#### Product data:

Product Type:	Primary Antibodies
Applications:	ICC/IF, WB
Recommended Dilution:	WB,1:500 - 1:2000 IF,1:50 - 1:200
Reactivity:	Human
Host:	Rabbit
Isotype:	IgG
Clonality:	Polyclonal
Immunogen:	Recombinant protein of human TXLNA.
Formulation:	Buffer: PBS with 0.02% sodium azide,50% glycerol,pH7.3.
Concentration:	lot specific
Purification:	Affinity purification
Conjugation:	Unconjugated
Storage:	Store at -20°C. Avoid freeze / thaw cycles.
Stability:	Shelf life: one year from despatch.
Predicted Protein Size:	61kDa
Gene Name:	taxilin alpha
Database Link:	<a href="#">Entrez Gene 200081 Human P40222</a>
Background:	May be involved in intracellular vesicle traffic and potentially in calcium-dependent exocytosis in neuroendocrine cells.
Synonyms:	alpha-taxilin; DKFZp451J0118; IL14; MGC118870; MGC118871; OTTHUMP00000004650; RP4-622L5.4; taxilin; TXLN

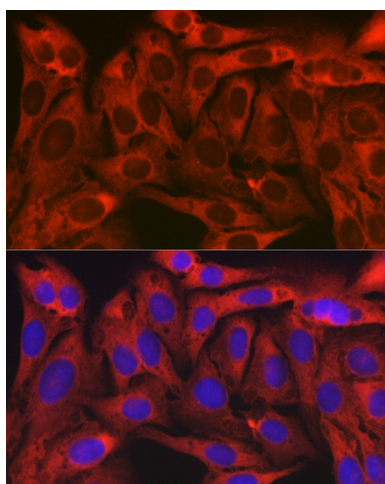


[View online »](#)

## Product images:



Western blot analysis of extracts of various cell lines, using TXLNA antibody (TA382952) at 1:1000 dilution. | Secondary antibody: HRP Goat Anti-Rabbit IgG (H+L) at 1:10000 dilution. | Lysates/proteins: 25ug per lane. | Blocking buffer: 3% nonfat dry milk in TBST. | Detection: ECL Basic Kit . | Exposure time: 1s.



Immunofluorescence analysis of U2OS cells using TXLNA Rabbit pAb (TA382952) at dilution of 1:150 (40x lens). Blue: DAPI for nuclear staining.