

Product datasheet for **TA382941**

TUFM Rabbit Polyclonal Antibody

Product data:

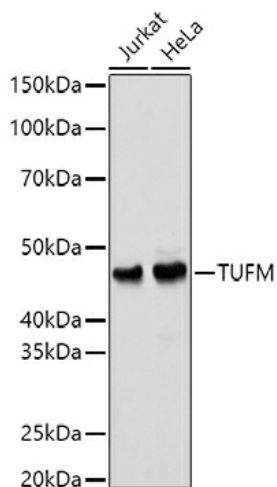
Product Type:	Primary Antibodies
Applications:	ICC/IF, IHC, IP, WB
Recommended Dilution:	WB,1:500 - 1:2000 IHC,1:50 - 1:200 IF,1:10 - 1:100 IP,1:50 - 1:200
Reactivity:	Human, Mouse, Rat
Modifications:	Unmodified
Host:	Rabbit
Isotype:	IgG
Clonality:	Polyclonal
Immunogen:	Recombinant fusion protein containing a sequence corresponding to amino acids 186-455 of human TUFM (NP_003312.3).
Formulation:	Buffer: PBS with 0.02% sodium azide,50% glycerol,pH7.3.
Concentration:	lot specific
Purification:	Affinity purification
Conjugation:	Unconjugated
Storage:	Store at -20°C. Avoid freeze / thaw cycles.
Stability:	Shelf life: one year from despatch.
Predicted Protein Size:	49kDa
Gene Name:	Tu translation elongation factor, mitochondrial
Database Link:	Entrez Gene 7284 Human P49411
Background:	This gene encodes a protein which participates in protein translation in mitochondria. Mutations in this gene have been associated with combined oxidative phosphorylation deficiency resulting in lactic acidosis and fatal encephalopathy. A pseudogene has been identified on chromosome 17.



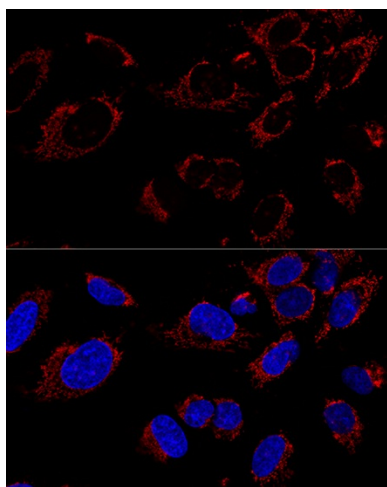
[View online »](#)

Synonyms: COXPD4; EF-Tu; EF-TuMT; EFTU; P43

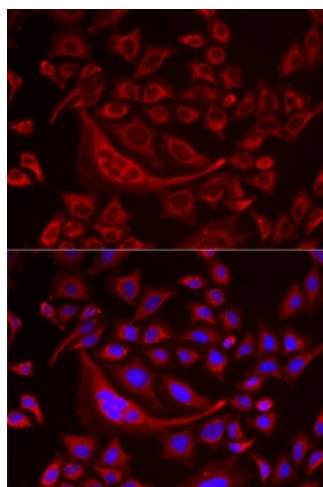
Product images:



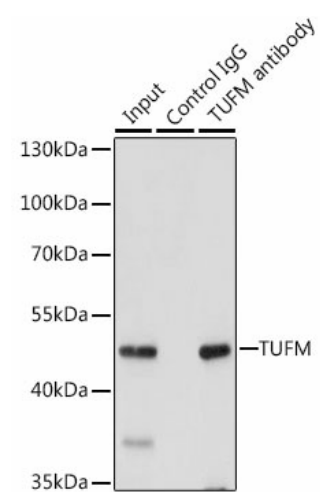
Western blot analysis of extracts of various cell lines, using TUFM antibody (TA382941) at 1:1000 dilution. | Secondary antibody: HRP Goat Anti-Rabbit IgG (H+L) at 1:10000 dilution. | Lysates/proteins: 25ug per lane. | Blocking buffer: 3% nonfat dry milk in TBST. | Detection: ECL Basic Kit. | Exposure time: 1s.



Confocal immunofluorescence analysis of U2OS cells using TUFM Polyclonal Antibody (TA382941) at dilution of 1:100. Blue: DAPI for nuclear staining.



Immunofluorescence analysis of MCF7 cells using TUFM antibody (TA382941). Blue: DAPI for nuclear staining.



Immunoprecipitation analysis of 200ug extracts of 293T cells, using 3 ug TUFM antibody (TA382941). Western blot was performed from the immunoprecipitate using TUFM antibody (TA382941) at a dilution of 1:1000.