

Product datasheet for **TA382940**

GCP6 (TUBGCP6) Rabbit Polyclonal Antibody

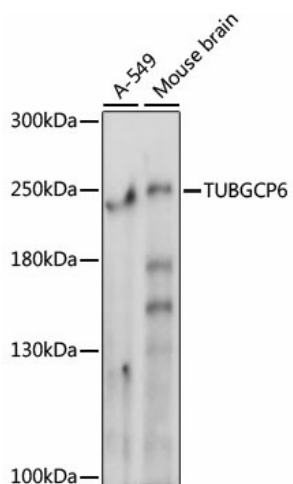
Product data:

Product Type:	Primary Antibodies
Applications:	IHC, WB
Recommended Dilution:	WB,1:500 - 1:2000 IHC,1:50 - 1:200
Reactivity:	Human, Mouse, Rat
Modifications:	Unmodified
Host:	Rabbit
Isotype:	IgG
Clonality:	Polyclonal
Immunogen:	Recombinant fusion protein containing a sequence corresponding to amino acids 600-900 of human TUBGCP6 (NP_065194.2).
Formulation:	Buffer: PBS with 0.02% sodium azide,50% glycerol,pH7.3.
Concentration:	lot specific
Purification:	Affinity purification
Conjugation:	Unconjugated
Storage:	Store at -20°C. Avoid freeze / thaw cycles.
Stability:	Shelf life: one year from despatch.
Predicted Protein Size:	196kDa/198kDa/200kDa
Gene Name:	tubulin gamma complex associated protein 6
Database Link:	Entrez Gene 85378 Human Q96RT7
Background:	The protein encoded by this gene is part of a large multisubunit complex required for microtubule nucleation at the centrosome.
Synonyms:	DJ402G11.6; GCP-6; GCP6; KIAA1669



[View online »](#)

Product images:



Western blot analysis of extracts of various cell lines, using TUBGCP6 antibody (TA382940) at 1000 dilution. | Secondary antibody: HRP Goat Anti-Rabbit IgG (H+L) at 1:10000 dilution. | Lysates/proteins: 25ug per lane. | Blocking buffer: 3% nonfat dry milk in TBST. | Detection: ECL Basic Kit . | Exposure time: 10s.