

Product datasheet for **TA382939**

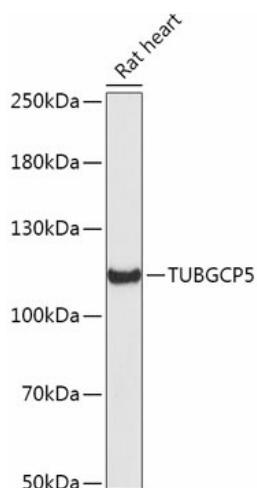
TUBGCP5 Rabbit Polyclonal Antibody

Product data:

Product Type:	Primary Antibodies
Applications:	ELISA, WB
Recommended Dilution:	WB, 1:500 - 1:2000 ELISA, Recommended starting concentration is 1 µg/mL. Please optimize the concentration based on your specific assay requirements.
Reactivity:	Rat
Modifications:	Unmodified
Host:	Rabbit
Isotype:	IgG
Clonality:	Polyclonal
Formulation:	Buffer: PBS with 0.01% thimerosal, 50% glycerol, pH7.3.
Concentration:	lot specific
Purification:	Affinity purification
Conjugation:	Unconjugated
Storage:	Store at -20°C. Avoid freeze / thaw cycles.
Stability:	Shelf life: one year from despatch.
Predicted Protein Size:	118kDa
Gene Name:	tubulin gamma complex associated protein 5
Database Link:	Q96RT8
Background:	Enables microtubule binding activity. Involved in microtubule nucleation. Located in centrosome and cytosol. Part of gamma-tubulin large complex.
Synonyms:	GCP-5; GCP5; KIAA1899



[View online »](#)

Product images:


Western blot analysis of lysates from Rat heart