

Product datasheet for TA382938S

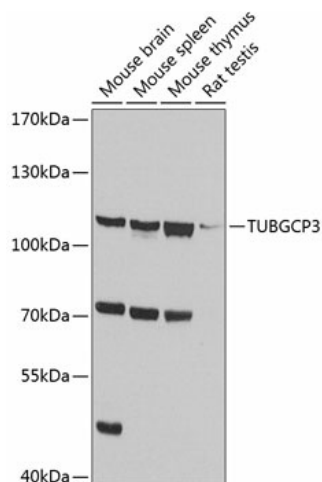
Gamma tubulin complex component 3 (TUBGCP3) Rabbit Polyclonal Antibody

Product data:

Product Type:	Primary Antibodies
Applications:	ELISA, WB
Recommended Dilution:	WB, 1:500 - 1:2000 ELISA, Recommended starting concentration is 1 µg/mL. Please optimize the concentration based on your specific assay requirements.
Reactivity:	Human, Mouse, Rat
Modifications:	Unmodified
Host:	Rabbit
Isotype:	IgG
Clonality:	Polyclonal
Formulation:	Buffer: PBS with 0.02% sodium azide, 50% glycerol, pH 7.3.
Concentration:	lot specific
Purification:	Affinity purification
Conjugation:	Unconjugated
Storage:	Store at -20°C. Avoid freeze / thaw cycles.
Stability:	Shelf life: one year from despatch.
Predicted Protein Size:	104kDa
Gene Name:	tubulin gamma complex associated protein 3
Database Link:	Entrez Gene 10426 Human Q96CW5
Background:	Enables gamma-tubulin binding activity. Predicted to be involved in meiotic cell cycle; microtubule cytoskeleton organization; and mitotic cell cycle. Located in cytoplasm and microtubule cytoskeleton.
Synonyms:	GCP-3; GCP3; h104p; hGCP3; hSpc98; SPBC98; Spc98p


[View online »](#)

Product images:



Western blot analysis of various lysates using TUBGCP3 Rabbit pAb (TA382938) at 1:1000 dilution.

Secondary antibody: HRP-conjugated Goat anti-Rabbit IgG (H+L) (AS014) at 1:10000 dilution.

Lysates/proteins: 25µg per lane.

Blocking buffer: 3% nonfat dry milk in TBST.

Detection: ECL Basic Kit (RM00020).

Exposure time: 30s.