

Product datasheet for **TA382938**

Gamma tubulin complex component 3 (TUBGCP3) Rabbit Polyclonal Antibody

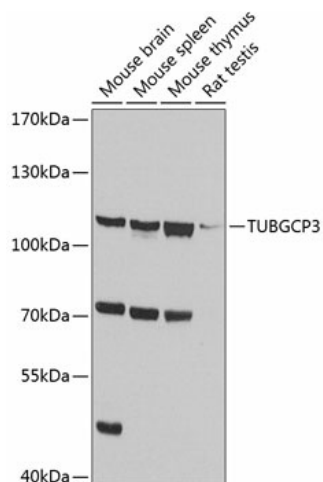
Product data:

Product Type:	Primary Antibodies
Applications:	WB
Recommended Dilution:	WB,1:500 - 1:2000
Reactivity:	Human, Mouse, Rat
Modifications:	Unmodified
Host:	Rabbit
Isotype:	IgG
Clonality:	Polyclonal
Immunogen:	Recombinant fusion protein containing a sequence corresponding to amino acids 1-250 of human TUBGCP3 (NP_001273207.1).
Formulation:	Buffer: PBS with 0.02% sodium azide,50% glycerol,pH7.3.
Concentration:	lot specific
Purification:	Affinity purification
Conjugation:	Unconjugated
Storage:	Store at -20°C. Avoid freeze / thaw cycles.
Stability:	Shelf life: one year from despatch.
Predicted Protein Size:	48kDa/93kDa/103kDa
Gene Name:	tubulin gamma complex associated protein 3
Database Link:	Entrez Gene 10426 Human Q96CW5
Background:	Gamma-tubulin complex is necessary for microtubule nucleation at the centrosome.
Synonyms:	GCP-3; GCP3; h104p; hGCP3; hSpc98; SPBC98; Spc98p



[View online »](#)

Product images:



Western blot analysis of extracts of various cell lines, using TUBGCP3 antibody (TA382938) at 1:1000 dilution. | Secondary antibody: HRP Goat Anti-Rabbit IgG (H+L) at 1:10000 dilution. | Lysates/proteins: 25ug per lane. | Blocking buffer: 3% nonfat dry milk in TBST. | Detection: ECL Basic Kit . | Exposure time: 30s.