

Product datasheet for **TA382934**

TUBD1 Rabbit Polyclonal Antibody

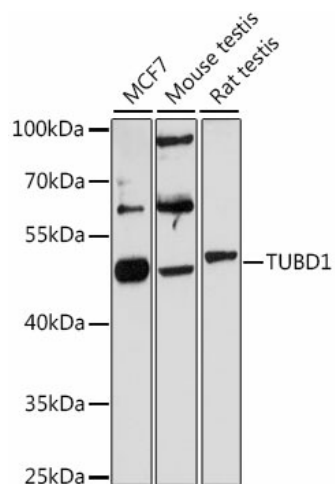
Product data:

Product Type:	Primary Antibodies
Applications:	WB
Recommended Dilution:	WB,1:1000 - 1:2000
Reactivity:	Human, Mouse, Rat
Modifications:	Unmodified
Host:	Rabbit
Isotype:	IgG
Clonality:	Polyclonal
Immunogen:	Recombinant fusion protein containing a sequence corresponding to amino acids 60-220 of human TUBD1 (NP_001180538.1).
Formulation:	Buffer: PBS with 0.02% sodium azide,50% glycerol,pH7.3.
Concentration:	lot specific
Purification:	Affinity purification
Conjugation:	Unconjugated
Storage:	Store at -20°C. Avoid freeze / thaw cycles.
Stability:	Shelf life: one year from despatch.
Predicted Protein Size:	22kDa/27kDa/39kDa/44kDa/51kDa
Gene Name:	tubulin delta 1
Database Link:	Entrez Gene 51174 Human Q9UJT1
Background:	Acts as a positive regulator of hedgehog signaling and regulates ciliary function.
Synonyms:	delta-tubulin; FLJ12709; TUBD



[View online »](#)

Product images:



Western blot analysis of extracts of various cell lines, using TUBD1 antibody (TA382934) at 1:3000 dilution. | Secondary antibody: HRP Goat Anti-Rabbit IgG (H+L) at 1:10000 dilution. | Lysates/proteins: 25ug per lane. | Blocking buffer: 3% nonfat dry milk in TBST. | Detection: ECL Basic Kit . | Exposure time: 90s.