

Product datasheet for **TA382924**

TTL Rabbit Polyclonal Antibody

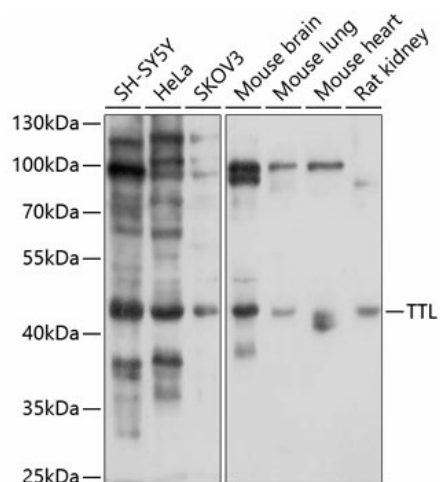
Product data:

Product Type:	Primary Antibodies
Applications:	WB
Recommended Dilution:	WB,1:1000 - 1:4000
Reactivity:	Human, Mouse, Rat
Modifications:	Unmodified
Host:	Rabbit
Isotype:	IgG
Clonality:	Polyclonal
Immunogen:	Recombinant fusion protein containing a sequence corresponding to amino acids 1-270 of human TTL (NP_714923.1).
Formulation:	Buffer: PBS with 0.02% sodium azide,50% glycerol,pH7.3.
Concentration:	lot specific
Purification:	Affinity purification
Conjugation:	Unconjugated
Storage:	Store at -20°C. Avoid freeze / thaw cycles.
Stability:	Shelf life: one year from despatch.
Predicted Protein Size:	43kDa
Gene Name:	tubulin tyrosine ligase
Database Link:	Entrez Gene 150465 Human Q8NG68
Background:	TTL is a cytosolic enzyme involved in the posttranslational modification of alpha-tubulin (see MIM 602529). Alpha-tubulin within assembled microtubules is detyrosinated over time at the C terminus. After microtubule disassembly, TTL restores the tyrosine residues and consequently participates in a cycle of tubulin detyrosination and tyrosination (Erck et al., 2003 [PubMed 14571137]).[supplied by OMIM, Mar 2008]
Synonyms:	2410003M22Rik; MGC46235



[View online »](#)

Product images:



Western blot analysis of extracts of various cell lines, using TTL antibody (TA382924) at 1:1000 dilution. | Secondary antibody: HRP Goat Anti-Rabbit IgG (H+L) at 1:10000 dilution. | Lysates/proteins: 25ug per lane. | Blocking buffer: 3% nonfat dry milk in TBST. | Detection: ECL Basic Kit . | Exposure time: 10s.