

## Product datasheet for **TA382920**

### TTC3 Rabbit Polyclonal Antibody

#### Product data:

Product Type:	Primary Antibodies
Applications:	WB
Recommended Dilution:	WB,1:500 - 1:2000
Reactivity:	Human, Mouse, Rat
Modifications:	Unmodified
Host:	Rabbit
Isotype:	IgG
Clonality:	Polyclonal
Immunogen:	Recombinant fusion protein containing a sequence corresponding to amino acids 1400-1700 of human TTC3 (NP_003307.3).
Formulation:	Buffer: PBS with 0.02% sodium azide,50% glycerol,pH7.3.
Concentration:	lot specific
Purification:	Affinity purification
Conjugation:	Unconjugated
Storage:	Store at -20°C. Avoid freeze / thaw cycles.
Stability:	Shelf life: one year from despatch.
Predicted Protein Size:	194kDa/203kDa/229kDa
Gene Name:	tetratricopeptide repeat domain 3
Database Link:	<a href="#">Entrez Gene 7267 Human P53804</a>



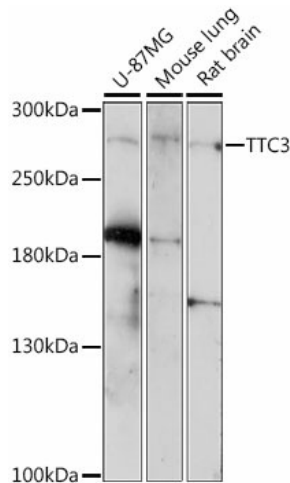
[View online »](#)

**Background:**

E3 ubiquitin-protein ligase which catalyzes the formation of 'Lys-48'-polyubiquitin chains. Mediates the ubiquitination and subsequent degradation of phosphorylated Akt (AKT1, AKT2 and AKT3 in the nucleus. Acts as a terminal regulator of Akt signaling after activation; its phosphorylation by Akt, which is a prerequisite for ubiquitin ligase activity, suggests the existence of a regulation mechanism required to control Akt levels after activation. Positively regulates TGF $\beta$ 1-induced epithelial-mesenchymal transition and myofibroblast differentiation by mediating the ubiquitination and subsequent degradation of SMURF2. Regulates neuronal differentiation by regulating actin remodeling and Golgi organization via a signaling cascade involving RHOA, CIT and ROCK. Inhibits cell proliferation.

**Synonyms:**

DCRR1; DKFZp686M0150; OTTHUMP00000109081; RNF105; TPRD; TPRDI; TPRDII; TPRDIII

**Product images:**

Western blot analysis of extracts of various cell lines, using TTC3 antibody (TA382920) at 1:1000 dilution. | Secondary antibody: HRP Goat Anti-Rabbit IgG (H+L) at 1:10000 dilution. | Lysates/proteins: 25ug per lane. | Blocking buffer: 3% nonfat dry milk in TBST. | Detection: ECL Enhanced Kit . | Exposure time: 3min.