

Product datasheet for **TA382910**

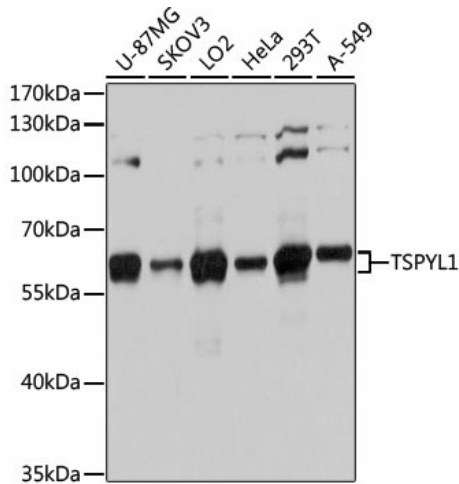
TSPYL1 Rabbit Polyclonal Antibody

Product data:

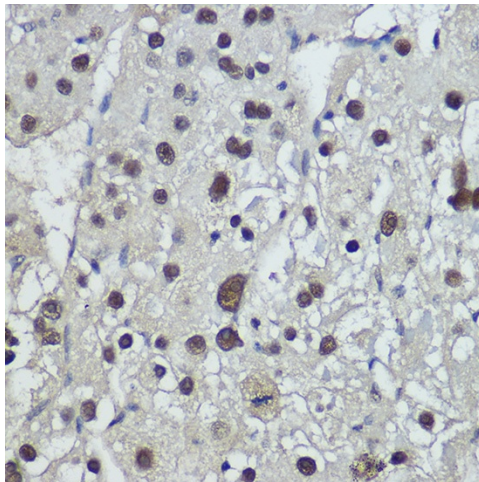
Product Type:	Primary Antibodies
Applications:	IHC, IP, WB
Recommended Dilution:	WB,1:500 - 1:2000 IHC,1:50 - 1:200 IP,1:50 - 1:100
Reactivity:	Human
Modifications:	Unmodified
Host:	Rabbit
Isotype:	IgG
Clonality:	Polyclonal
Immunogen:	Recombinant fusion protein containing a sequence corresponding to amino acids 1-230 of human TSPYL1 (NP_003300.1).
Formulation:	Buffer: PBS with 0.02% sodium azide,50% glycerol,pH7.3.
Concentration:	lot specific
Purification:	Affinity purification
Conjugation:	Unconjugated
Storage:	Store at -20°C. Avoid freeze / thaw cycles.
Stability:	Shelf life: one year from despatch.
Predicted Protein Size:	49kDa
Gene Name:	TSPY-like 1
Database Link:	Entrez Gene 7259 Human Q9H0U9
Background:	The protein encoded by this gene is found in the nucleolus and is similar to that of a family of genes on the Y-chromosome. This gene is intronless. Defects in this gene are a cause of sudden infant death with dysgenesis of the testes syndrome (SIDDT).
Synonyms:	SIDDT; TSPY-like; TSPYL



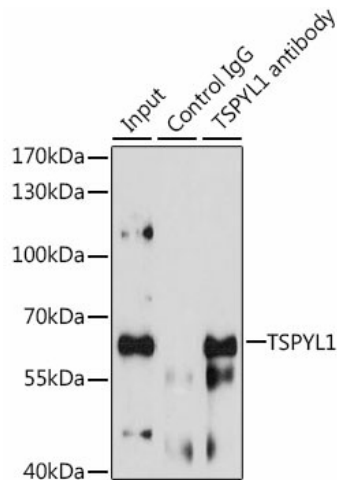
[View online »](#)

Product images:


Western blot analysis of extracts of various cell lines, using TSPYL1 antibody (TA382910) at 1:3000 dilution. | Secondary antibody: HRP Goat Anti-Rabbit IgG (H+L) at 1:10000 dilution. | Lysates/proteins: 25ug per lane. | Blocking buffer: 3% nonfat dry milk in TBST. | Detection: ECL Basic Kit . | Exposure time: 3s.



Immunohistochemistry of paraffin-embedded human liver cancer using TSPYL1 Rabbit pAb (TA382910) at dilution of 1:400 (40x lens). Perform high pressure antigen retrieval with 10 mM citrate buffer pH 6.0 before commencing with IHC staining protocol.



Immunoprecipitation analysis of 200ug extracts of HeLa cells, using 3 ug TSPYL1 antibody (TA382910). Western blot was performed from the immunoprecipitate using TSPYL1 antibody (TA382910) at a dilution of 1:1000.

