

Product datasheet for **TA382904S**

TSPAN4 Rabbit Polyclonal Antibody

Product data:

| | |
|-------------------------|--|
| Product Type: | Primary Antibodies |
| Applications: | WB |
| Recommended Dilution: | WB,1:1000 - 1:2000 |
| Reactivity: | Mouse, Rat, Human |
| Modifications: | Unmodified |
| Host: | Rabbit |
| Isotype: | IgG |
| Clonality: | Polyclonal |
| Immunogen: | Recombinant fusion protein containing a sequence corresponding to amino acids 107-201 of human TSPAN4 (NP_003262.1). |
| Formulation: | Buffer: PBS with 0.02% sodium azide,50% glycerol,pH7.3. |
| Concentration: | lot specific |
| Purification: | Affinity purification |
| Conjugation: | Unconjugated |
| Storage: | Store at -20°C. Avoid freeze / thaw cycles. |
| Stability: | Shelf life: one year from despatch. |
| Predicted Protein Size: | 26kDa |
| Gene Name: | tetraspanin 4 |
| Database Link: | Entrez Gene 7106 Human O14817 |

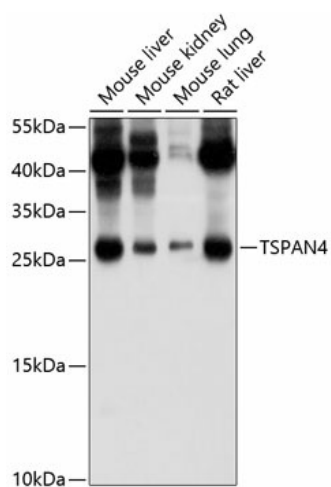
Background: The protein encoded by this gene is a member of the transmembrane 4 superfamily, also known as the tetraspanin family. Most of these members are cell-surface proteins that are characterized by the presence of four hydrophobic domains. The proteins mediate signal transduction events that play a role in the regulation of cell development, activation, growth and motility. This encoded protein is a cell surface glycoprotein and is similar in sequence to its family member CD53 antigen. It is known to complex with integrins and other transmembrane 4 superfamily proteins. Alternatively spliced transcript variants encoding different isoforms have been identified.



[View online »](#)

Synonyms: NAG-2; NAG2; OTTHUMP00000164428; TETRASPAN; TM4SF7; TSPAN-4

Product images:



Western blot analysis of extracts of various cell lines, using TSPAN4 antibody ([TA382904]) at 1:1000 dilution. | Secondary antibody: HRP Goat Anti-Rabbit IgG (H+L) at 1:10000 dilution. | Lysates/proteins: 25ug per lane. | Blocking buffer: 3% nonfat dry milk in TBST. | Detection: ECL Basic Kit . | Exposure time: 15s.