

## Product datasheet for **TA382883S**

### Hamartin (TSC1) Rabbit Polyclonal Antibody

#### Product data:

Product Type:	Primary Antibodies
Applications:	ELISA, ICC/IF, IHC, WB
Recommended Dilution:	WB, 1:500 - 1:1000 IHC-P, 1:50 - 1:100 IF/ICC, 1:50 - 1:100 ELISA, Recommended starting concentration is 1 µg/mL. Please optimize the concentration based on your specific assay requirements.
Reactivity:	Human, Mouse, Rat
Modifications:	Unmodified
Host:	Rabbit
Isotype:	IgG
Clonality:	Polyclonal
Formulation:	Buffer: PBS with 0.02% sodium azide, 50% glycerol, pH 7.3.
Concentration:	lot specific
Purification:	Affinity purification
Conjugation:	Unconjugated
Storage:	Store at -20°C. Avoid freeze / thaw cycles.
Stability:	Shelf life: one year from despatch.
Predicted Protein Size:	130kDa
Gene Name:	tuberous sclerosis 1
Database Link:	<a href="#">Entrez Gene 7248 Human Q92574</a>



[View online »](#)

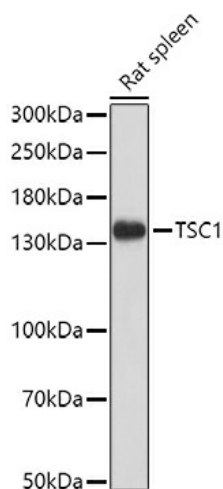
## Background:

This gene is a tumor suppressor gene that encodes the growth inhibitory protein hamartin. The encoded protein interacts with and stabilizes the GTPase activating protein tuberin. This hamartin-tuberin complex negatively regulates mammalian target of rapamycin complex 1 (mTORC1) signaling which is a major regulator of anabolic cell growth. This protein also functions as a co-chaperone for Hsp90 that inhibits its ATPase activity. This protein functions as a facilitator of Hsp90-mediated folding of kinase and non-kinase clients, including TSC2 and thereby preventing their ubiquitination and proteasomal degradation. Mutations in this gene have been associated with tuberous sclerosis and lymphangioleiomyomatosis.

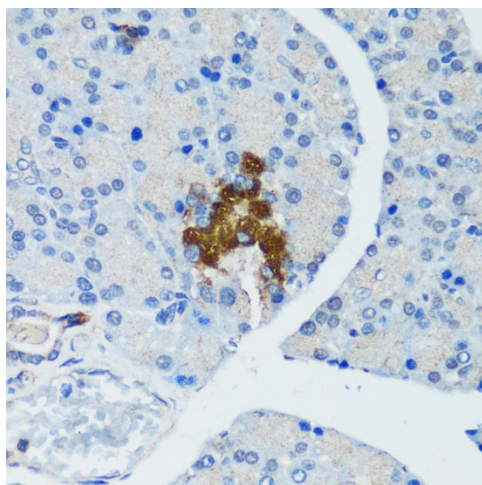
## Synonyms:

hamartin; KIAA0243; LAM; MGC86987; OTTHUMP00000022439; OTTHUMP00000198378; TSC

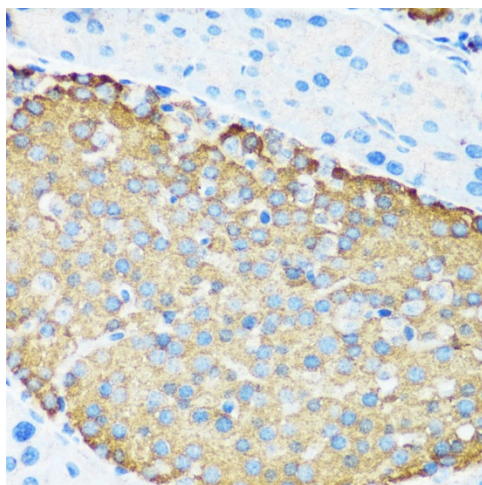
## Product images:



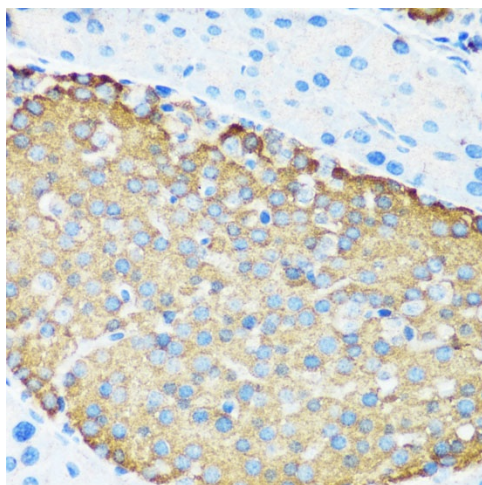
Western blot analysis of lysates from Rat spleen



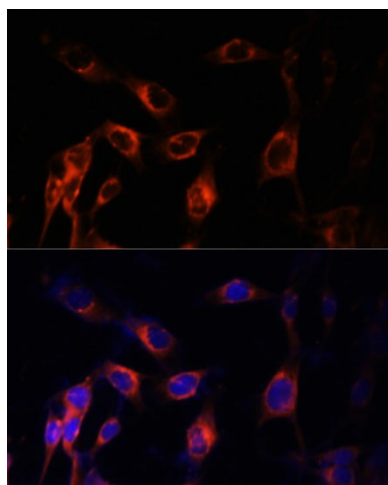
Immunohistochemistry analysis of paraffin-embedded Rat pancreatic islet using TSC1 Rabbit pAb ([TA382883]) at dilution of 1:200 (40x lens). Microwave antigen retrieval performed with 0.01M PBS Buffer (pH 7.2) prior to IHC staining.



Immunohistochemistry analysis of paraffin-embedded Human gastric cancer using TSC1 Rabbit pAb ([TA382883]) at dilution of 1:200 (40x lens). Microwave antigen retrieval performed with 0.01M PBS Buffer (pH 7.2) prior to IHC staining.



Immunohistochemistry analysis of paraffin-embedded Mouse pancreatic islet using TSC1 Rabbit pAb ([TA382883]) at dilution of 1:200 (40x lens). Microwave antigen retrieval performed with 0.01M PBS Buffer (pH 7.2) prior to IHC staining.



Immunofluorescence analysis of NIH-3T3 cells using TSC1 Rabbit pAb ([TA382883]) at dilution of 1:100 (40x lens). Secondary antibody: Cy3-conjugated Goat anti-Rabbit IgG (H+L) (AS007) at 1:500 dilution. Blue: DAPI for nuclear staining.