

Product datasheet for **TA382873**

TRPM8 Rabbit Polyclonal Antibody

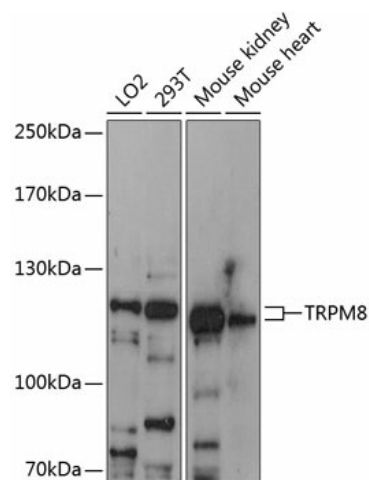
Product data:

Product Type:	Primary Antibodies
Applications:	ELISA, WB
Recommended Dilution:	WB, 1:500 - 1:2000 ELISA, Recommended starting concentration is 1 µg/mL. Please optimize the concentration based on your specific assay requirements.
Reactivity:	Human, Mouse
Modifications:	Unmodified
Host:	Rabbit
Isotype:	IgG
Clonality:	Polyclonal
Formulation:	Buffer: PBS with 0.01% thimerosal, 50% glycerol, pH7.3.
Concentration:	lot specific
Purification:	Affinity purification
Conjugation:	Unconjugated
Storage:	Store at -20°C. Avoid freeze / thaw cycles.
Stability:	Shelf life: one year from despatch.
Predicted Protein Size:	128kDa
Gene Name:	transient receptor potential cation channel subfamily M member 8
Database Link:	Entrez Gene 79054 Human Q7Z2W7
Background:	Predicted to enable ligand-gated calcium channel activity. Predicted to be involved in calcium ion transmembrane transport and positive regulation of cold-induced thermogenesis. Predicted to act upstream of or within several processes, including cellular calcium ion homeostasis; response to cold; and thermoception. Located in plasma membrane.
Synonyms:	LTRPC6; MGC2849; Trp-p8; TRPP8



[View online »](#)

Product images:



Western blot analysis of various lysates using TRPM8 Rabbit pAb (TA382873) at 1:3000 dilution. Secondary antibody: HRP-conjugated Goat anti-Rabbit IgG (H+L) (AS014) at 1:10000 dilution. Lysates/proteins: 25µg per lane. Blocking buffer: 3% nonfat dry milk in TBST. Detection: ECL Enhanced Kit (RM00021). Exposure time: 60s.