

## Product datasheet for **TA382816S**

### **KAP1 (TRIM28) Rabbit Polyclonal Antibody**

#### **Product data:**

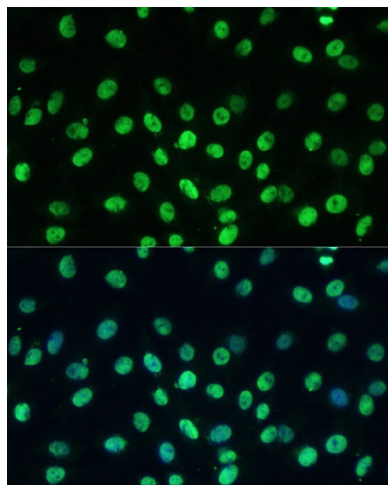
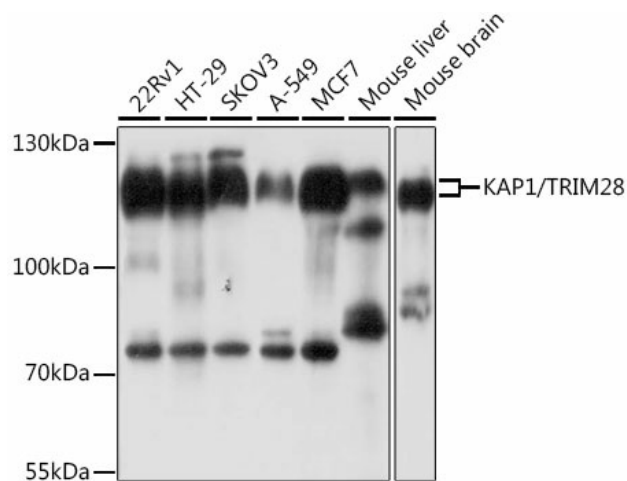
<b>Product Type:</b>	Primary Antibodies
<b>Applications:</b>	ICC/IF, IHC, IP, WB
<b>Recommended Dilution:</b>	WB,1:1000 - 1:3000 IHC,1:100 - 1:200 IF,1:50 - 1:200 IP,1:50 - 1:200
<b>Reactivity:</b>	Human, Mouse, Rat
<b>Modifications:</b>	Unmodified
<b>Host:</b>	Rabbit
<b>Isotype:</b>	IgG
<b>Clonality:</b>	Polyclonal
<b>Immunogen:</b>	Recombinant fusion protein containing a sequence corresponding to amino acids 576-835 of human KAP1/KAP1/TRIM28 (NP_005753.1).
<b>Formulation:</b>	Buffer: PBS with 0.02% sodium azide,50% glycerol,pH7.3.
<b>Concentration:</b>	lot specific
<b>Purification:</b>	Affinity purification
<b>Conjugation:</b>	Unconjugated
<b>Storage:</b>	Store at -20°C. Avoid freeze / thaw cycles.
<b>Stability:</b>	Shelf life: one year from despatch.
<b>Predicted Protein Size:</b>	79kDa/88kDa
<b>Gene Name:</b>	tripartite motif containing 28
<b>Database Link:</b>	<a href="#">Entrez Gene 10155 Human Q13263</a>
<b>Background:</b>	The protein encoded by this gene mediates transcriptional control by interaction with the Kruppel-associated box repression domain found in many transcription factors. The protein localizes to the nucleus and is thought to associate with specific chromatin regions. The protein is a member of the tripartite motif family. This tripartite motif includes three zinc-binding domains, a RING, a B-box type 1 and a B-box type 2, and a coiled-coil region.

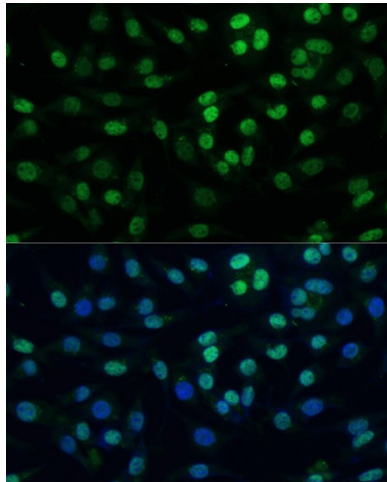


[View online »](#)

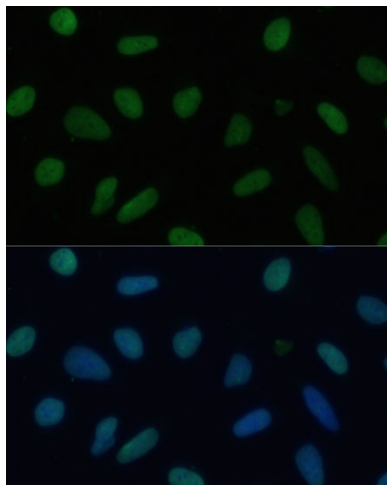
Synonyms: FLJ29029; KAP-1; KAP1; KRIP-1; RNF96; TF1B; TIF1-beta; TIF1B

**Product images:**

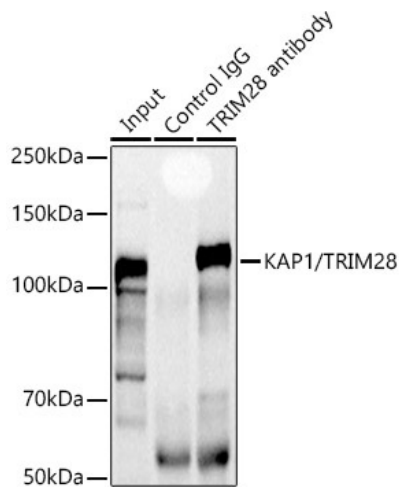




Immunofluorescence analysis of L929 cells using KAP1/KAP1/TRIM28 Polyclonal Antibody ([TA382816]) at dilution of 1:100 (40x lens). Blue: DAPI for nuclear staining.



Immunofluorescence analysis of U-2 OS cells using KAP1/KAP1/TRIM28 Polyclonal Antibody ([TA382816]) at dilution of 1:100 (40x lens). Blue: DAPI for nuclear staining.



Immunoprecipitation analysis of 300ug extracts of HeLa cells using 3ug KAP1/TRIM28 antibody ([TA382816]). Western blot was performed from the immunoprecipitate using KAP1/TRIM28 antibody ([TA382816]) at a dilution of 1:1000.