

## Product datasheet for **TA382800S**

### TRIB1 Rabbit Polyclonal Antibody

#### Product data:

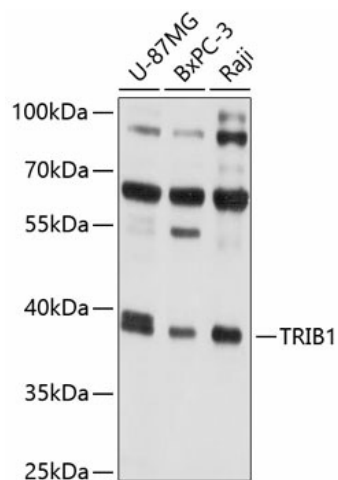
Product Type:	Primary Antibodies
Applications:	WB
Recommended Dilution:	WB,1:1000 - 1:4000
Reactivity:	Human
Modifications:	Unmodified
Host:	Rabbit
Isotype:	IgG
Clonality:	Polyclonal
Immunogen:	Recombinant fusion protein containing a sequence corresponding to amino acids 203-372 of human TRIB1 (NP_079471.1).
Formulation:	Buffer: PBS with 0.02% sodium azide,50% glycerol,pH7.3.
Concentration:	lot specific
Purification:	Affinity purification
Conjugation:	Unconjugated
Storage:	Store at -20°C. Avoid freeze / thaw cycles.
Stability:	Shelf life: one year from despatch.
Predicted Protein Size:	23kDa/41kDa
Gene Name:	tribbles pseudokinase 1
Database Link:	<a href="#">Entrez Gene 10221 Human Q96RU8</a>
Background:	Adapter protein involved in protein degradation by interacting with COP1 ubiquitin ligase. The COP1-binding motif is masked by autoinhibitory interactions with the protein kinase domain. Serves to alter COP1 substrate specificity by directing the activity of COP1 toward CEBPA. Binds selectively the recognition sequence of CEBPA. Regulates myeloid cell differentiation by altering the expression of CEBPA in a COP1-dependent manner (By similarity. Controls macrophage, eosinophil and neutrophil differentiation via the COP1-binding domain (By similarity. Interacts with MAPK kinases and regulates activation of MAP kinases, but has no kinase activity.



[View online »](#)

Synonyms: C8FW; GIG-2; GIG2; SKIP1; TRB-1; TRB1

### Product images:



Western blot analysis of extracts of various cell lines, using TRIB1 antibody ([TA382800]) at 1:1000 dilution. | Secondary antibody: HRP Goat Anti-Rabbit IgG (H+L) at 1:10000 dilution. | Lysates/proteins: 25ug per lane. | Blocking buffer: 3% nonfat dry milk in TBST. | Detection: ECL Basic Kit . | Exposure time: 5s.