

## Product datasheet for **TA382790**

### TRAPPC6B Rabbit Polyclonal Antibody

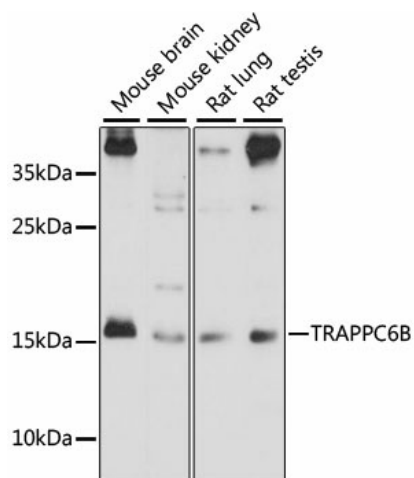
#### Product data:

|                         |   |
|-------------------------|---|
| Product Type:           | Primary Antibodies  |
| Applications:           | IHC, WB   |
| Recommended Dilution:   | WB, 1:200 - 1:2000<br>IHC, 1:50 - 1:200   |
| Reactivity:             | Mouse, Rat  |
| Modifications:          | Unmodified  |
| Host:                   | Rabbit  |
| Isotype:                | IgG   |
| Clonality:              | Polyclonal  |
| Immunogen:              | Recombinant fusion protein containing a sequence corresponding to amino acids 1-130 of human TRAPPC6B (NP_803235.1).  |
| Formulation:            | Buffer: PBS with 0.02% sodium azide, 50% glycerol, pH 7.3.  |
| Concentration:          | lot specific  |
| Purification:           | Affinity purification   |
| Conjugation:            | Unconjugated  |
| Storage:                | Store at -20°C. Avoid freeze / thaw cycles.   |
| Stability:              | Shelf life: one year from despatch.   |
| Predicted Protein Size: | 14kDa/17kDa   |
| Gene Name:              | trafficking protein particle complex 6B   |
| Database Link:          | <a href="#">Q86SZ2</a>  |
| Background:             | TRAPPC6B is a component of TRAPP complexes, which are tethering complexes involved in vesicle transport (Kummel et al., 2005 [PubMed 16025134]). [supplied by OMIM, Mar 2008] |
| Synonyms:               | FLJ17772; FLJ79549; TPC6  |



[View online »](#)

## Product images:



Western blot analysis of extracts of various cell lines, using TRAPPC6B antibody (TA382790) at 1:1000 dilution. | Secondary antibody: HRP Goat Anti-Rabbit IgG (H+L) at 1:10000 dilution. | Lysates/proteins: 25ug per lane. | Blocking buffer: 3% nonfat dry milk in TBST. | Detection: ECL Basic Kit. | Exposure time: 90s.