

Product datasheet for **TA382768S**

TPX2 Rabbit Polyclonal Antibody

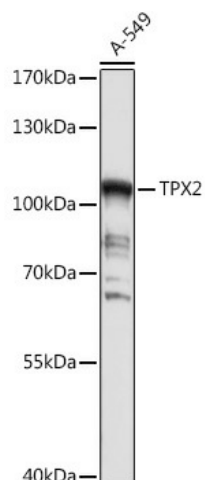
Product data:

Product Type:	Primary Antibodies
Applications:	ELISA, ICC/IF, IHC, WB
Recommended Dilution:	WB, 1:500 - 1:1000 IHC-P, 1:50 - 1:200 IF/ICC, 1:50 - 1:200 ELISA, Recommended starting concentration is 1 µg/mL. Please optimize the concentration based on your specific assay requirements.
Reactivity:	Human, Rat
Host:	Rabbit
Isotype:	IgG
Clonality:	Polyclonal
Formulation:	Buffer: PBS with 0.02% sodium azide, 50% glycerol, pH7.3.
Concentration:	lot specific
Purification:	Affinity purification
Conjugation:	Unconjugated
Storage:	Store at -20°C. Avoid freeze / thaw cycles.
Stability:	Shelf life: one year from despatch.
Predicted Protein Size:	86kDa
Gene Name:	TPX2, microtubule nucleation factor
Database Link:	Entrez Gene 22974 Human Q9ULW0
Background:	Enables importin-α family protein binding activity and protein kinase binding activity. Involved in activation of protein kinase activity; microtubule cytoskeleton organization; and negative regulation of microtubule depolymerization. Located in intercellular bridge; mitotic spindle; and nucleoplasm. Colocalizes with spindle pole.
Synonyms:	C20orf1; C20orf2; DIL-2; DIL2; FLS353; GD:C20orf1; HCA519; HCTP4; p100; REPP86

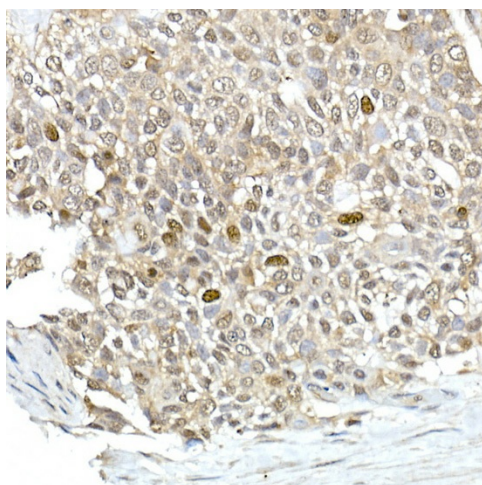


[View online »](#)

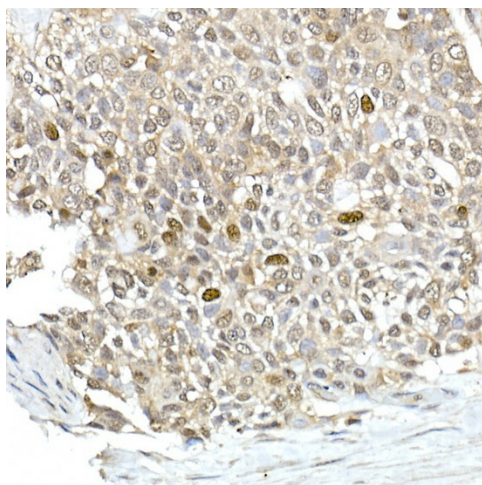
Product images:



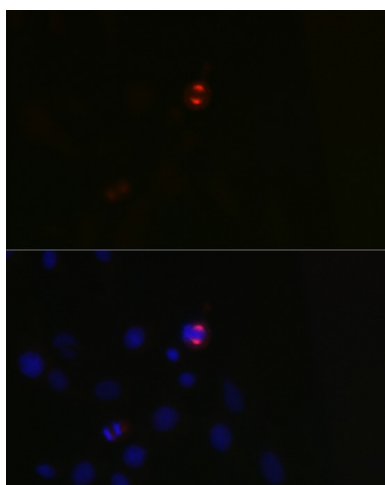
Western blot analysis of lysates from A-549 cells



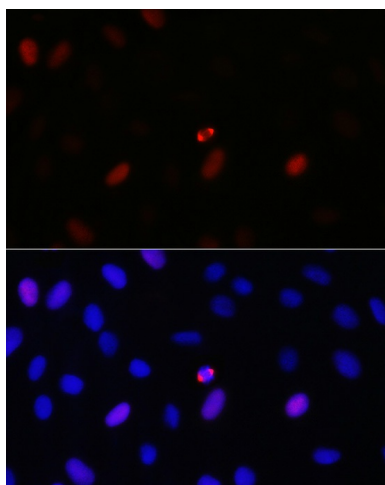
Immunohistochemistry analysis of paraffin-embedded Human colon carcinoma using TPX2 Rabbit pAb ([TA382768]) at dilution of 1:100 (40x lens). High pressure antigen retrieval performed with 0.01M Citrate Bufferr (pH 6.0) prior to IHC staining.



Immunohistochemistry analysis of paraffin-embedded Human esophageal cancer using TPX2 Rabbit pAb ([TA382768]) at dilution of 1:100 (40x lens). High pressure antigen retrieval performed with 0.01M Citrate Bufferr (pH 6.0) prior to IHC staining.



Immunofluorescence analysis of C6 cells using TPX2 Rabbit pAb ([TA382768]) at dilution of 1:100 (40x lens). Secondary antibody: Cy3-conjugated Goat anti-Rabbit IgG (H+L) (AS007) at 1:500 dilution. Blue: DAPI for nuclear staining.



Immunofluorescence analysis of U-2 OS cells using TPX2 Rabbit pAb ([TA382768]) at dilution of 1:100 (40x lens). Secondary antibody: Cy3-conjugated Goat anti-Rabbit IgG (H+L) (AS007) at 1:500 dilution. Blue: DAPI for nuclear staining.