

## Product datasheet for **TA382762**

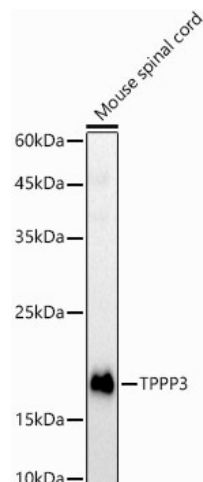
### TPPP3 Rabbit Polyclonal Antibody

#### Product data:

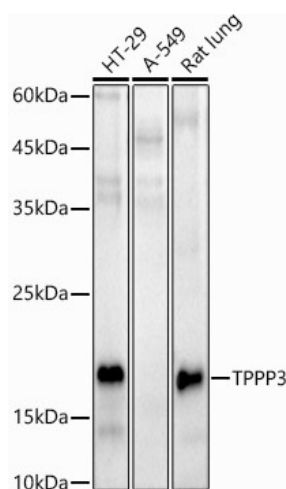
Product Type:	Primary Antibodies
Applications:	ELISA, WB
Recommended Dilution:	WB, 1:500 - 1:1000 ELISA, Recommended starting concentration is 1 µg/mL. Please optimize the concentration based on your specific assay requirements.
Reactivity:	Human, Mouse, Rat
Modifications:	Unmodified
Host:	Rabbit
Isotype:	IgG
Clonality:	Polyclonal
Formulation:	Buffer: PBS with 0.02% sodium azide, 50% glycerol, pH 7.3.
Concentration:	lot specific
Purification:	Affinity purification
Conjugation:	Unconjugated
Storage:	Store at -20°C. Avoid freeze / thaw cycles.
Stability:	Shelf life: one year from despatch.
Predicted Protein Size:	19kDa
Gene Name:	tubulin polymerization promoting protein family member 3
Database Link:	<a href="#">Entrez Gene 51673 Human Q9BW30</a>
Background:	Enables tubulin binding activity. Involved in decidualization and microtubule bundle formation. Colocalizes with microtubule bundle and perinuclear region of cytoplasm.
Synonyms:	CGI-38; p20; p25gamma; TPPP/p20


[View online »](#)

## Product images:



Western blot analysis of lysates from Mouse spinal cord



Western blot analysis of various lysates using TPPP3 Rabbit pAb (TA382762) at 1:1000 dilution. Secondary antibody: HRP-conjugated Goat anti-Rabbit IgG (H+L) (AS014) at 1:10000 dilution. Lysates/proteins: 25µg per lane. Blocking buffer: 3% nonfat dry milk in TBST. Detection: ECL Basic Kit (RM00020). Exposure time: 180s.