

## Product datasheet for **TA382761S**

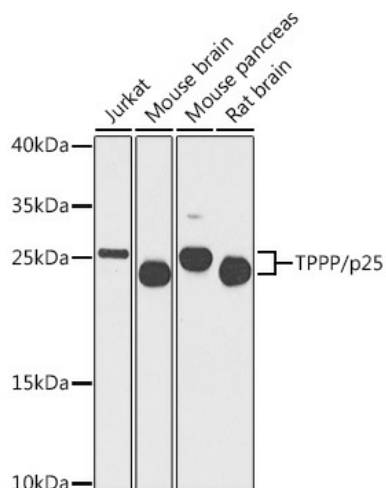
### Tubulin Polymerization Promoting Protein (TPPP) Rabbit Polyclonal Antibody

#### Product data:

Product Type:	Primary Antibodies
Applications:	ELISA, WB
Recommended Dilution:	WB, 1:500 - 1:2000 ELISA, Recommended starting concentration is 1 µg/mL. Please optimize the concentration based on your specific assay requirements.
Reactivity:	Human, Mouse, Rat
Modifications:	Unmodified
Host:	Rabbit
Isotype:	IgG
Clonality:	Polyclonal
Formulation:	Buffer: PBS with 0.02% sodium azide, 50% glycerol, pH 7.3.
Concentration:	lot specific
Purification:	Affinity purification
Conjugation:	Unconjugated
Storage:	Store at -20°C. Avoid freeze / thaw cycles.
Stability:	Shelf life: one year from despatch.
Predicted Protein Size:	24kDa
Gene Name:	tubulin polymerization promoting protein
Database Link:	<a href="#">Entrez Gene 11076 Human</a> <a href="#">O94811</a>
Background:	Enables several functions, including GTPase activity; magnesium ion binding activity; and protein homodimerization activity. Involved in several processes, including microtubule cytoskeleton organization; negative regulation of tubulin deacetylation; and positive regulation of protein polymerization. Located in several cellular components, including mitochondrion; mitotic spindle; and perinuclear region of cytoplasm. Colocalizes with microtubule and microtubule bundle.
Synonyms:	p24; p25; p25-alpha; p25alpha; TPPP/p25; TPPP1



[View online »](#)

**Product images:**


Western blot analysis of various lysates using TPPP/p25 Rabbit pAb (TA382761S) at 1:1000 dilution.

Secondary antibody: HRP-conjugated Goat anti-Rabbit IgG (H+L) (AS014) at 1:10000 dilution.

Lysates/proteins: 25µg per lane.

Blocking buffer: 3% nonfat dry milk in TBST.

Detection: ECL Basic Kit (RM00020).

Exposure time: 30s.