

## Product datasheet for **TA382761**

### Tubulin Polymerization Promoting Protein (TPPP) Rabbit Polyclonal Antibody

#### Product data:

Product Type:	Primary Antibodies
Applications:	WB
Recommended Dilution:	WB,1:500 - 1:2000
Reactivity:	Human, Mouse, Rat
Modifications:	Unmodified
Host:	Rabbit
Isotype:	IgG
Clonality:	Polyclonal
Immunogen:	Recombinant fusion protein containing a sequence corresponding to amino acids 1-219 of human TPPP/p25 (NP_008961.1).
Formulation:	Buffer: PBS with 0.02% sodium azide,50% glycerol,pH7.3.
Concentration:	lot specific
Purification:	Affinity purification
Conjugation:	Unconjugated
Storage:	Store at -20°C. Avoid freeze / thaw cycles.
Stability:	Shelf life: one year from despatch.
Predicted Protein Size:	23kDa
Gene Name:	tubulin polymerization promoting protein
Database Link:	<a href="#">Entrez Gene 11076 Human O94811</a>



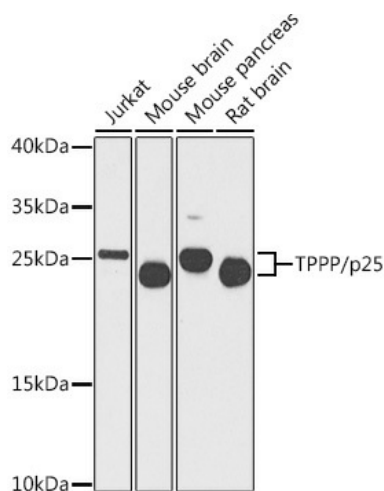
[View online »](#)

**Background:**

Regulator of microtubule dynamics that plays a key role in myelination by promoting elongation of the myelin sheath. Acts as a microtubule nucleation factor in oligodendrocytes: specifically localizes to the postsynaptic Golgi apparatus region, also named Golgi outpost, and promotes microtubule nucleation, an important step for elongation of the myelin sheath. Required for both uniform polarized growth of distal microtubules as well as directing the branching of proximal processes. Shows magnesium-dependent GTPase activity; the role of the GTPase activity is unclear. In addition to microtubule nucleation activity, also involved in microtubule bundling and stabilization of existing microtubules, thereby maintaining the integrity of the microtubule network. Regulates microtubule dynamics by promoting tubulin acetylation: acts by inhibiting the tubulin deacetylase activity of HDAC6. Also regulates cell migration: phosphorylation by ROCK1 inhibits interaction with HDAC6, resulting in decreased acetylation of tubulin and increased cell motility. Plays a role in cell proliferation by regulating the G1/S-phase transition. Involved in astral microtubule organization and mitotic spindle orientation during early stage of mitosis; this process is regulated by phosphorylation by LIMK2.

**Synonyms:**

p24; p25; p25-alpha; p25alpha; TPPP/p25; TPPP1

**Product images:**


Western blot analysis of extracts of various cell lines, using TPPP/p25 antibody (TA382761) at 1:1000 dilution. | Secondary antibody: HRP Goat Anti-Rabbit IgG (H+L) at 1:10000 dilution. | Lysates/proteins: 25ug per lane. | Blocking buffer: 3% nonfat dry milk in TBST. | Detection: ECL Basic Kit . | Exposure time: 30s.