

Product datasheet for **TA382756**

Tropomyosin 2 (TPM2) Rabbit Polyclonal Antibody

Product data:

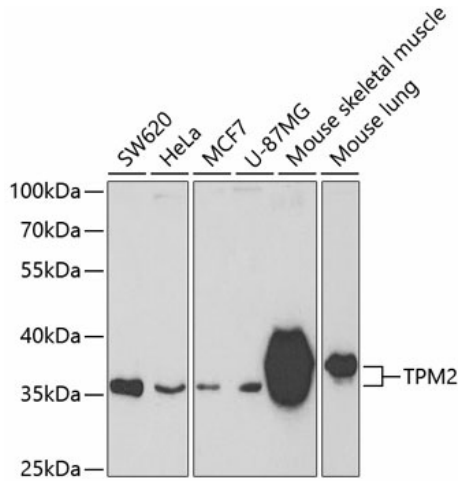
Product Type:	Primary Antibodies
Applications:	ICC/IF, IHC, IP, WB
Recommended Dilution:	WB,1:500 - 1:1000 IHC,1:50 - 1:100 IF,1:50 - 1:100 IP,1:50 - 1:100
Reactivity:	Human, Mouse, Rat
Modifications:	Unmodified
Host:	Rabbit
Isotype:	IgG
Clonality:	Polyclonal
Immunogen:	A synthetic peptide of human TPM2
Formulation:	Buffer: PBS with 0.02% sodium azide,50% glycerol,pH7.3.
Concentration:	lot specific
Purification:	Affinity purification
Conjugation:	Unconjugated
Storage:	Store at -20°C. Avoid freeze / thaw cycles.
Stability:	Shelf life: one year from despatch.
Predicted Protein Size:	28kDa/32kDa
Gene Name:	tropomyosin 2 (beta)
Database Link:	Entrez Gene 7169 Human P07951
Background:	This gene encodes beta-tropomyosin, a member of the actin filament binding protein family, and mainly expressed in slow, type 1 muscle fibers. Mutations in this gene can alter the expression of other sarcomeric tropomyosin proteins, and cause cap disease, nemaline myopathy and distal arthrogyrosis syndromes. Alternatively spliced transcript variants encoding different isoforms have been found for this gene.



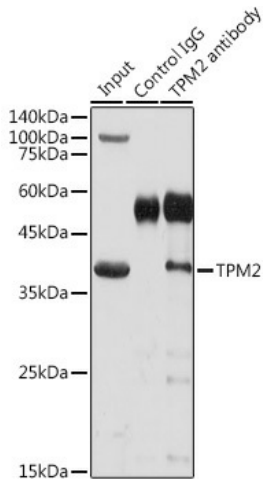
[View online »](#)

Synonyms: AMCD1; Beta-tropomyosin; DA1; DA2B; NEM4; TMSB; Tropomyosin-2

Product images:



Western blot analysis of extracts of various cell lines, using TPM2 antibody (TA382756) at 1:400 dilution. | Secondary antibody: HRP Goat Anti-Rabbit IgG (H+L) at 1:10000 dilution. | Lysates/proteins: 25ug per lane. | Blocking buffer: 3% nonfat dry milk in TBST. | Detection: ECL Basic Kit. | Exposure time: 90s.



Immunoprecipitation analysis of 300ug extracts of Mouse skeletal muscle cells using 3ug TPM2 antibody (TA382756). Western blot was performed from the immunoprecipitate using TPM2 antibody (TA382756) at a dilution of 1:1000.