

Product datasheet for **TA382755S**

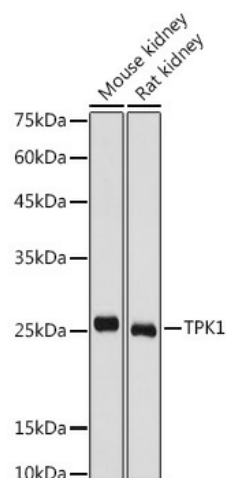
TPK1 Rabbit Polyclonal Antibody

Product data:

Product Type:	Primary Antibodies
Applications:	ELISA, WB
Recommended Dilution:	WB, 1:500 - 1:1000 ELISA, Recommended starting concentration is 1 µg/mL. Please optimize the concentration based on your specific assay requirements.
Reactivity:	Human, Mouse, Rat
Modifications:	Unmodified
Host:	Rabbit
Isotype:	IgG
Clonality:	Polyclonal
Formulation:	Buffer: PBS with 0.02% sodium azide, 50% glycerol, pH 7.3.
Concentration:	lot specific
Purification:	Affinity purification
Conjugation:	Unconjugated
Storage:	Store at -20°C. Avoid freeze / thaw cycles.
Stability:	Shelf life: one year from despatch.
Predicted Protein Size:	27kDa
Gene Name:	thiamin pyrophosphokinase 1
Database Link:	Entrez Gene 27010 Human Q9H3S4
Background:	The protein encoded by this gene functions as a homodimer and catalyzes the conversion of thiamine to thiamine pyrophosphate, a cofactor for some enzymes of the glycolytic and energy production pathways. Defects in this gene are a cause of thiamine metabolism dysfunction syndrome-5.
Synonyms:	hTPK1; PP20

[View online »](#)

Product images:



Western blot analysis of various lysates using TPK1 Rabbit pAb (TA382755S) at 1:1000 dilution. Secondary antibody: HRP-conjugated Goat anti-Rabbit IgG (H+L) (AS014) at 1:10000 dilution. Lysates/proteins: 25µg per lane. Blocking buffer: 3% nonfat dry milk in TBST. Detection: ECL Basic Kit (RM00020). Exposure time: 1s.