

## Product datasheet for **TA382748S**

### TPD52 Rabbit Polyclonal Antibody

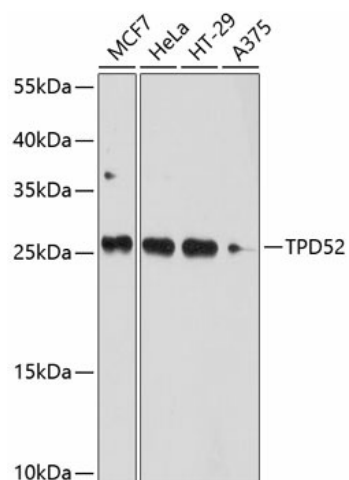
#### Product data:

Product Type:	Primary Antibodies
Applications:	IHC, WB
Recommended Dilution:	WB,1:1000 - 1:2000 IHC,1:50 - 1:200
Reactivity:	Human, Rat
Modifications:	Unmodified
Host:	Rabbit
Isotype:	IgG
Clonality:	Polyclonal
Immunogen:	Recombinant fusion protein containing a sequence corresponding to amino acids 1-184 of human TPD52 (NP_005070.1).
Formulation:	Buffer: PBS with 0.02% sodium azide,50% glycerol,pH7.3.
Concentration:	lot specific
Purification:	Affinity purification
Conjugation:	Unconjugated
Storage:	Store at -20°C. Avoid freeze / thaw cycles.
Stability:	Shelf life: one year from despatch.
Predicted Protein Size:	16kDa/19kDa/22kDa/24kDa/25kDa/26kDa
Gene Name:	tumor protein D52
Database Link:	<a href="#">Entrez Gene 7163 Human P55327</a>
Synonyms:	D52; hD52; N8L; PC-1; PrLZ



[View online »](#)

## Product images:



Western blot analysis of extracts of various cell lines, using TPD52 antibody ([TA382748]) at 1:1000 dilution. | Secondary antibody: HRP Goat Anti-Rabbit IgG (H+L) at 1:10000 dilution. | Lysates/proteins: 25ug per lane. | Blocking buffer: 3% nonfat dry milk in TBST. | Detection: ECL Basic Kit . | Exposure time: 10s.