

## Product datasheet for **TA382715**

### TOX2 Rabbit Polyclonal Antibody

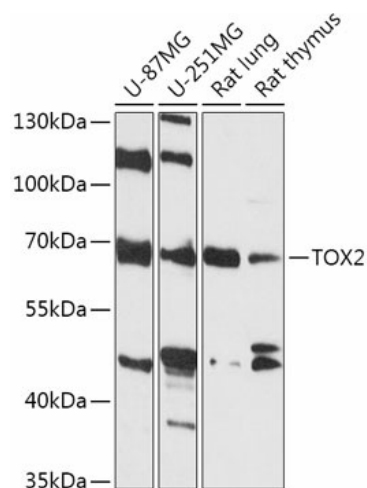
#### Product data:

Product Type:	Primary Antibodies
Applications:	WB
Recommended Dilution:	WB,1:500 - 1:2000
Reactivity:	Human, Mouse, Rat
Modifications:	Unmodified
Host:	Rabbit
Isotype:	IgG
Clonality:	Polyclonal
Immunogen:	Recombinant fusion protein containing a sequence corresponding to amino acids 1-140 of human TOX2 (NP_116272.1).
Formulation:	Buffer: PBS with 0.02% sodium azide,50% glycerol,pH7.3.
Concentration:	lot specific
Purification:	Affinity purification
Conjugation:	Unconjugated
Storage:	Store at -20°C. Avoid freeze / thaw cycles.
Stability:	Shelf life: one year from despatch.
Gene Name:	TOX high mobility group box family member 2
Database Link:	<a href="#">Entrez Gene 84969 Human Q96NM4</a>
Background:	Putative transcriptional activator involved in the hypothalamo-pituitary-gonadal system.
Synonyms:	C20orf100; dj495O3.1; dj1108D11.2; GCX-1; GCX1; MGC15880; OTTHUMP00000031038



[View online »](#)

## Product images:



Western blot analysis of extracts of various cell lines, using TOX2 antibody (TA382715) at 1:1000 dilution. | Secondary antibody: HRP Goat Anti-Rabbit IgG (H+L) at 1:10000 dilution. | Lysates/proteins: 25ug per lane. | Blocking buffer: 3% nonfat dry milk in TBST. | Detection: ECL Basic Kit. | Exposure time: 90s.