

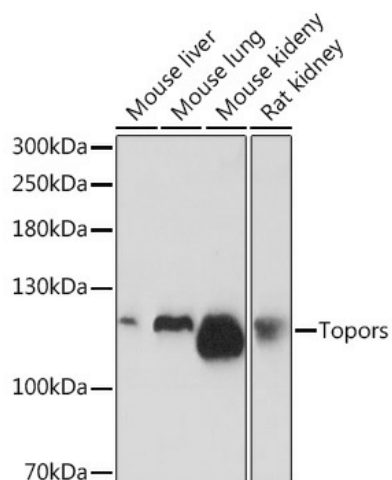
## Product datasheet for TA382713S

### Topors Rabbit Polyclonal Antibody

#### Product data:

Product Type:	Primary Antibodies
Applications:	ELISA, WB
Recommended Dilution:	WB, 1:500 - 1:2000 ELISA, Recommended starting concentration is 1 µg/mL. Please optimize the concentration based on your specific assay requirements.
Reactivity:	Mouse, Rat
Host:	Rabbit
Isotype:	IgG
Clonality:	Polyclonal
Formulation:	Buffer: PBS with 0.02% sodium azide, 50% glycerol, pH 7.3.
Concentration:	lot specific
Purification:	Affinity purification
Conjugation:	Unconjugated
Storage:	Store at -20°C. Avoid freeze / thaw cycles.
Stability:	Shelf life: one year from despatch.
Predicted Protein Size:	117kDa
Gene Name:	topoisomerase I binding, arginine/serine-rich
Database Link:	<a href="#">Entrez Gene 106021 Mouse Q80Z37</a>
Background:	Predicted to enable several functions, including DNA topoisomerase binding activity; antigen binding activity; and ubiquitin-like protein transferase activity. Acts upstream of or within intrinsic apoptotic signaling pathway in response to DNA damage by p53 class mediator; positive regulation of transcription, DNA-templated; and regulation of cell population proliferation. Located in ciliary basal body; nucleus; and photoreceptor connecting cilium. Is expressed in skin. Human ortholog(s) of this gene implicated in retinitis pigmentosa 31. Orthologous to human TOPORS (TOP1 binding arginine/serine rich protein, E3 ubiquitin ligase).
Synonyms:	LUN; p53BP3; RP31; TP53BPL

[View online »](#)

**Product images:**

Western blot analysis of various lysates using Topors Rabbit pAb (TA382713S) at 1:1000 dilution.

Secondary antibody: HRP-conjugated Goat anti-Rabbit IgG (H+L) (AS014) at 1:10000 dilution.

Lysates/proteins: 25µg per lane.

Blocking buffer: 3% nonfat dry milk in TBST.

Detection: ECL Basic Kit (RM00020).

Exposure time: 3min.