

## Product datasheet for **TA382705**

### Topoisomerase I (TOP1) Rabbit Polyclonal Antibody

#### Product data:

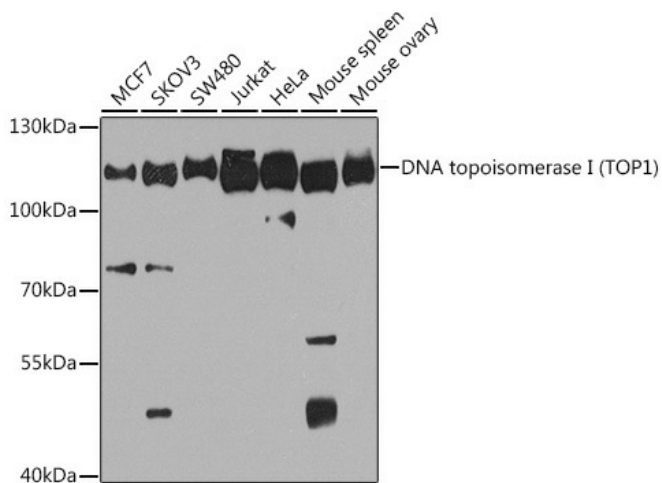
Product Type:	Primary Antibodies
Applications:	IHC, IP, WB
Recommended Dilution:	WB,1:500 - 1:2000 IHC,1:50 - 1:200 IP,1:20 - 1:50
Reactivity:	Human, Mouse
Modifications:	Unmodified
Host:	Rabbit
Isotype:	IgG
Clonality:	Polyclonal
Immunogen:	A synthetic peptide corresponding to a sequence within amino acids 1-100 of human DNA topoisomerase I (DNA topoisomerase I (TOP1)) (NP_003277.1).
Formulation:	Buffer: PBS with 0.02% sodium azide,50% glycerol,pH7.3.
Concentration:	lot specific
Purification:	Affinity purification
Conjugation:	Unconjugated
Storage:	Store at -20°C. Avoid freeze / thaw cycles.
Stability:	Shelf life: one year from despatch.
Predicted Protein Size:	90kDa
Gene Name:	topoisomerase (DNA) I
Database Link:	<a href="#">Entrez Gene 7150 Human P11387</a>
Background:	This gene encodes a DNA topoisomerase, an enzyme that controls and alters the topologic states of DNA during transcription. This enzyme catalyzes the transient breaking and rejoining of a single strand of DNA which allows the strands to pass through one another, thus altering the topology of DNA. This gene is localized to chromosome 20 and has pseudogenes which reside on chromosomes 1 and 22.



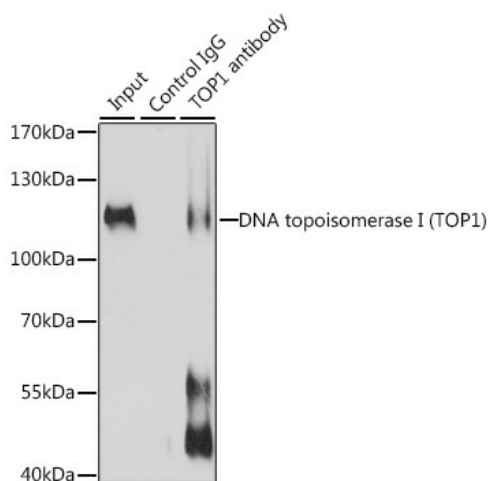
[View online »](#)

Synonyms: TOPI

**Product images:**



Western blot analysis of extracts of various cell lines, using DNA topoisomerase I (DNA topoisomerase I (TOP1)) antibody (TA382705) at 1:1000 dilution. |Secondary antibody: HRP Goat Anti-Rabbit IgG (H+L) at 1:10000 dilution. |Lysates/proteins: 25ug per lane. |Blocking buffer: 3% nonfat dry milk in TBST. |Detection: ECL Basic Kit . |Exposure time: 90s.



Immunoprecipitation analysis of 200ug extracts of Jurkat cells, using 3 ug DNA topoisomerase I (DNA topoisomerase I (TOP1)) antibody (TA382705). Western blot was performed from the immunoprecipitate using DNA topoisomerase I (DNA topoisomerase I (TOP1)) antibody (TA382705) at a dilution of 1:1000.