

Product datasheet for **TA382701**

TOMM40 Rabbit Polyclonal Antibody

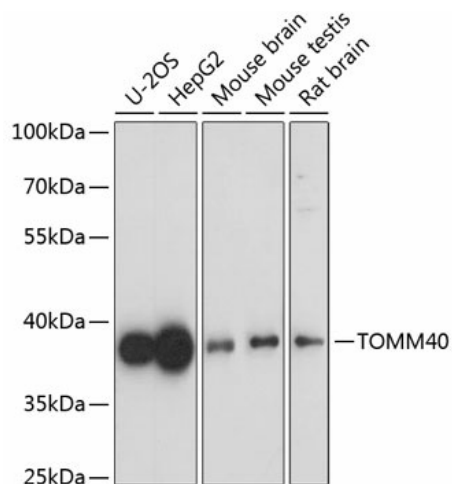
Product data:

Product Type:	Primary Antibodies
Applications:	ICC/IF, IHC, WB
Recommended Dilution:	WB,1:500 - 1:2000 IHC,1:50 - 1:200 IF,1:50 - 1:200
Reactivity:	Human, Mouse, Rat
Modifications:	Unmodified
Host:	Rabbit
Isotype:	IgG
Clonality:	Polyclonal
Immunogen:	Recombinant fusion protein containing a sequence corresponding to amino acids 1-90 of human TOMM40 (NP_001122389.1).
Formulation:	Buffer: PBS with 0.02% sodium azide,50% glycerol,pH7.3.
Concentration:	lot specific
Purification:	Affinity purification
Conjugation:	Unconjugated
Storage:	Store at -20°C. Avoid freeze / thaw cycles.
Stability:	Shelf life: one year from despatch.
Predicted Protein Size:	34kDa/37kDa
Gene Name:	translocase of outer mitochondrial membrane 40
Database Link:	Entrez Gene 10452 Human O96008
Background:	The protein encoded by this gene is localized in the outer membrane of the mitochondria. It is the channel-forming subunit of the translocase of the mitochondrial outer membrane (TOM) complex that is essential for import of protein precursors into mitochondria. Alternatively spliced transcript variants have been found for this gene.
Synonyms:	C19orf1; D19S1177E; p38.5; PER-EC1; PEREC1; TOM40

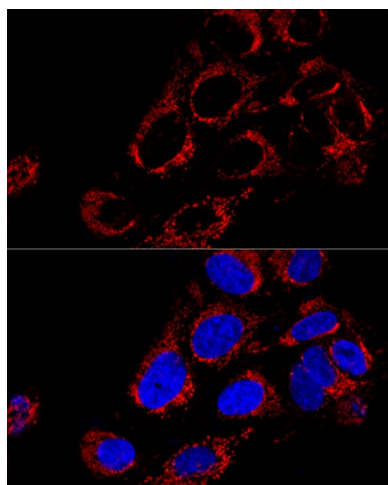


[View online »](#)

Product images:



Western blot analysis of extracts of various cell lines, using TOMM40 antibody (TA382701) at 1:1000 dilution. | Secondary antibody: HRP Goat Anti-Rabbit IgG (H+L) at 1:10000 dilution. | Lysates/proteins: 25ug per lane. | Blocking buffer: 3% nonfat dry milk in TBST. | Detection: ECL Basic Kit. | Exposure time: 60s.



Confocal immunofluorescence analysis of U2OS cells using TOMM40 Polyclonal Antibody (TA382701) at dilution of 1:200. Blue: DAPI for nuclear staining.