

## Product datasheet for **TA382699**

### **TOMM22 Rabbit Polyclonal Antibody**

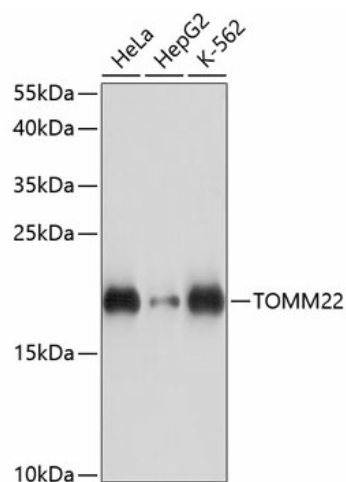
#### **Product data:**

|                                |   |
|--------------------------------|---|
| <b>Product Type:</b>           | Primary Antibodies  |
| <b>Applications:</b>           | WB  |
| <b>Recommended Dilution:</b>   | WB,1:500 - 1:2000<br>IHC,1:50 - 1:200   |
| <b>Reactivity:</b>             | Human, Mouse  |
| <b>Modifications:</b>          | Unmodified  |
| <b>Host:</b>                   | Rabbit  |
| <b>Isotype:</b>                | IgG   |
| <b>Clonality:</b>              | Polyclonal  |
| <b>Immunogen:</b>              | Recombinant fusion protein containing a sequence corresponding to amino acids 1-83 of human TOMM22 (NP_064628.1).   |
| <b>Formulation:</b>            | Buffer: PBS with 0.02% sodium azide,50% glycerol,pH7.3.   |
| <b>Concentration:</b>          | lot specific  |
| <b>Purification:</b>           | Affinity purification   |
| <b>Conjugation:</b>            | Unconjugated  |
| <b>Storage:</b>                | Store at -20°C. Avoid freeze / thaw cycles.   |
| <b>Stability:</b>              | Shelf life: one year from despatch.   |
| <b>Predicted Protein Size:</b> | 15kDa   |
| <b>Gene Name:</b>              | translocase of outer mitochondrial membrane 22  |
| <b>Database Link:</b>          | <a href="#">Entrez Gene 56993 Human Q9NS69</a>  |
| <b>Background:</b>             | The protein encoded by this gene is an integral membrane protein of the mitochondrial outer membrane. The encoded protein interacts with TOMM20 and TOMM40, and forms a complex with several other proteins to import cytosolic preproteins into the mitochondrion. |
| <b>Synonyms:</b>               | 1C9-2; hTom22; MST065; MSTP065; TOM22   |



[View online »](#)

## Product images:



Western blot analysis of extracts of various cell lines, using TOMM22 antibody (TA382699) at 1:3000 dilution. | Secondary antibody: HRP Goat Anti-Rabbit IgG (H+L) at 1:10000 dilution. | Lysates/proteins: 25ug per lane. | Blocking buffer: 3% nonfat dry milk in TBST. | Detection: ECL Basic Kit . | Exposure time: 10s.