

## Product datasheet for **TA382688S**

### GW182 (TNRC6A) Rabbit Polyclonal Antibody

#### Product data:

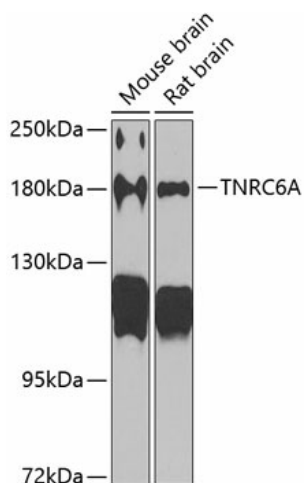
Product Type:	Primary Antibodies
Applications:	ICC/IF, WB
Recommended Dilution:	WB,1:500 - 1:1000 IF,1:50 - 1:100
Reactivity:	Human, Mouse, Rat
Modifications:	Unmodified
Host:	Rabbit
Isotype:	IgG
Clonality:	Polyclonal
Immunogen:	A synthetic peptide corresponding to a sequence within amino acids 950-1050 of human TNRC6A (NP_055309.2).
Formulation:	Buffer: PBS with 0.02% sodium azide,50% glycerol,pH7.3.
Concentration:	lot specific
Purification:	Affinity purification
Conjugation:	Unconjugated
Storage:	Store at -20°C. Avoid freeze / thaw cycles.
Stability:	Shelf life: one year from despatch.
Predicted Protein Size:	17kDa/36kDa/182kDa/205kDa/206kDa/210kDa
Gene Name:	trinucleotide repeat containing 6A
Database Link:	<a href="#">Entrez Gene 27327 Human Q8NDV7</a>
Background:	This gene encodes a member of the trinucleotide repeat containing 6 protein family. The protein functions in post-transcriptional gene silencing through the RNA interference (RNAi) and microRNA pathways. The protein associates with messenger RNAs and Argonaute proteins in cytoplasmic bodies known as GW-bodies or P-bodies. Inhibiting expression of this gene delocalizes other GW-body proteins and impairs RNAi and microRNA-induced gene silencing.



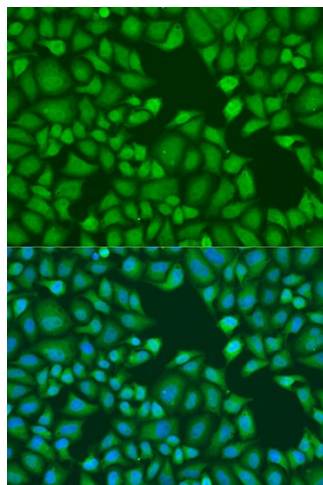
[View online »](#)

Synonyms: CAGH26; DKFZp666E117; EDIE; FLJ22043; GW1; GW182; KIAA1460; MGC75384; TNRC6

### Product images:



Western blot analysis of extracts of various cell lines, using TNRC6A antibody ([TA382688]) at 1:1000 dilution. | Secondary antibody: HRP Goat Anti-Rabbit IgG (H+L) at 1:10000 dilution. | Lysates/proteins: 25ug per lane. | Blocking buffer: 3% nonfat dry milk in TBST. | Detection: ECL Basic Kit. | Exposure time: 90s.



Immunofluorescence analysis of U2OS cells using TNRC6A antibody ([TA382688]) at dilution of 1:100. Blue: DAPI for nuclear staining.