

Product datasheet for **TA382639S**

Tumor necrosis factor alpha induced protein 8 like protein 2 (TNFAIP8L2) Rabbit Polyclonal Antibody

Product data:

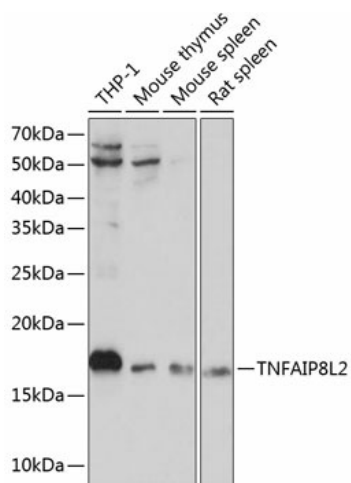
Product Type:	Primary Antibodies
Applications:	ICC/IF, IP, WB
Recommended Dilution:	WB,1:500 - 1:2000 IF,1:50 - 1:200 IP,1:50 - 1:200
Reactivity:	Human, Mouse, Rat
Modifications:	Unmodified
Host:	Rabbit
Isotype:	IgG
Clonality:	Polyclonal
Immunogen:	Recombinant fusion protein containing a sequence corresponding to amino acids 1-184 of human TNFAIP8L2 (NP_078851.2).
Formulation:	Buffer: PBS with 0.02% sodium azide,50% glycerol,pH7.3.
Concentration:	lot specific
Purification:	Affinity purification
Conjugation:	Unconjugated
Storage:	Store at -20°C. Avoid freeze / thaw cycles.
Stability:	Shelf life: one year from despatch.
Predicted Protein Size:	20kDa
Gene Name:	TNF alpha induced protein 8 like 2
Database Link:	Entrez Gene 79626 Human Q6P589
Background:	Acts as a negative regulator of innate and adaptive immunity by maintaining immune homeostasis. Negative regulator of Toll-like receptor and T-cell receptor function. Prevents hyperresponsiveness of the immune system and maintains immune homeostasis. Inhibits JUN/AP1 and NF-kappa-B activation. Promotes Fas-induced apoptosis (By similarity).



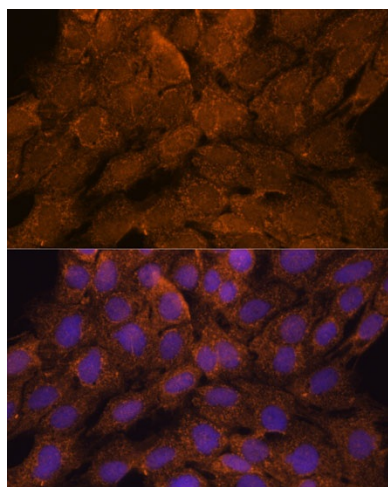
[View online »](#)

Synonyms: FLJ23467; TIPE2

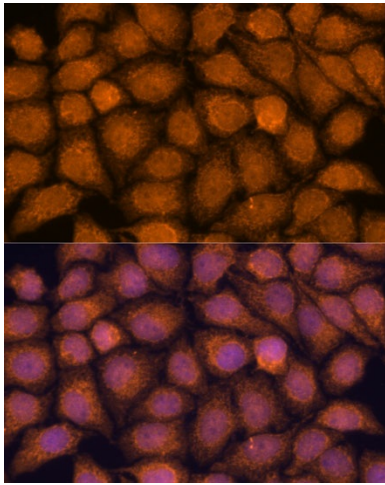
Product images:



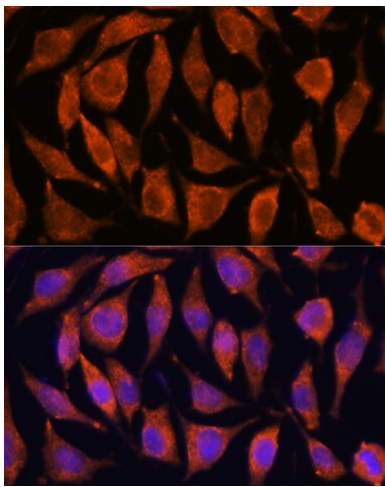
Western blot analysis of extracts of various cell lines, using TNFAIP8L2 Polyclonal Antibody ([TA382639]) at 1:1000 dilution. | Secondary antibody: HRP Goat Anti-Rabbit IgG (H+L) at 1:10000 dilution. | Lysates/proteins: 25ug per lane. | Blocking buffer: 3% nonfat dry milk in TBST. | Detection: ECL Basic Kit . | Exposure time: 10s.



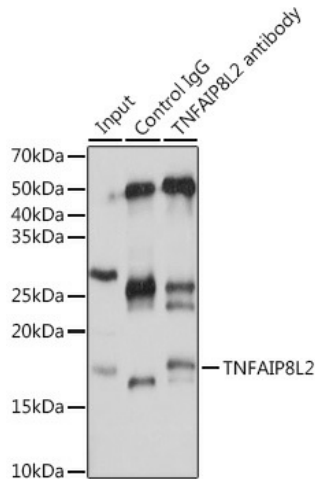
Immunofluorescence analysis of C6 cells using TNFAIP8L2 antibody ([TA382639]) at dilution of 1:100. Blue: DAPI for nuclear staining.



Immunofluorescence analysis of HeLa cells using TNFAIP8L2 antibody ([TA382639]) at dilution of 1:100. Blue: DAPI for nuclear staining.



Immunofluorescence analysis of L929 cells using TNFAIP8L2 antibody ([TA382639]) at dilution of 1:100. Blue: DAPI for nuclear staining.



Immunoprecipitation analysis of 25ug extracts of Mouse spleen cells using 3ug TNFAIP8L2 antibody ([TA382639]). Western blot was performed from the immunoprecipitate using TNFAIP8L2 antibody ([TA382639]) at a dilution of 1:1000.