

## Product datasheet for **TA382617S**

### TMEM70 Rabbit Polyclonal Antibody

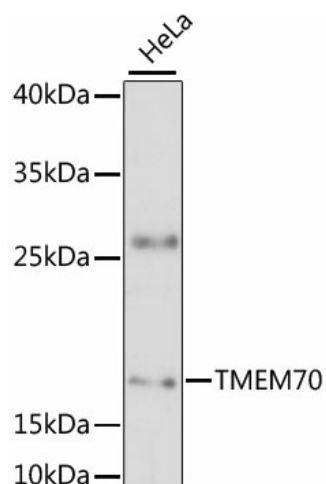
#### Product data:

Product Type:	Primary Antibodies
Applications:	WB
Recommended Dilution:	WB,1:500 - 1:2000
Reactivity:	Human, Mouse
Modifications:	Unmodified
Host:	Rabbit
Isotype:	IgG
Clonality:	Polyclonal
Immunogen:	Recombinant fusion protein containing a sequence corresponding to amino acids 161-260 of human TMEM70 (NP_060336.3).
Formulation:	Buffer: PBS with 0.02% sodium azide,50% glycerol,pH7.3.
Concentration:	lot specific
Purification:	Affinity purification
Conjugation:	Unconjugated
Storage:	Store at -20°C. Avoid freeze / thaw cycles.
Stability:	Shelf life: one year from despatch.
Predicted Protein Size:	11kDa/18kDa/28kDa
Gene Name:	transmembrane protein 70
Database Link:	<a href="#">Entrez Gene 54968 Human Q9BUB7</a>
Background:	This gene likely encodes a mitochondrial membrane protein. The encoded protein may play a role in biogenesis of mitochondrial ATP synthase. Mutations in this gene have been associated with neonatal mitochondrial encephalocardiomyopathy due to ATP synthase deficiency. Alternatively spliced transcript variants have been described.
Synonyms:	FLJ20533



[View online »](#)

## Product images:



Western blot analysis of extracts of HeLa cells, using TMEM70 antibody ([TA382617]) at 1:3000 dilution. | Secondary antibody: HRP Goat Anti-Rabbit IgG (H+L) at 1:10000 dilution. | Lysates/proteins: 25ug per lane. | Blocking buffer: 3% nonfat dry milk in TBST. | Detection: ECL Basic Kit . | Exposure time: 90s.