

Product datasheet for **TA382607**

TMEM25 Rabbit Polyclonal Antibody

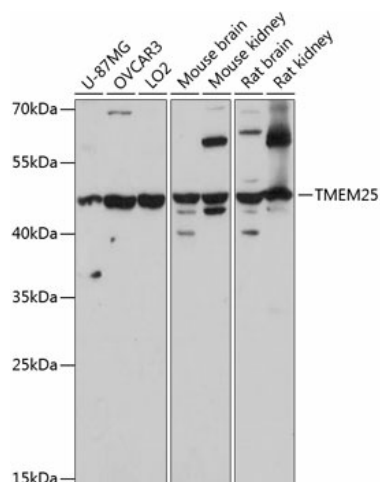
Product data:

Product Type:	Primary Antibodies
Applications:	ICC/IF, WB
Recommended Dilution:	WB,1:500 - 1:2000 IF,1:50 - 1:200
Reactivity:	Human, Mouse, Rat
Modifications:	Unmodified
Host:	Rabbit
Isotype:	IgG
Clonality:	Polyclonal
Immunogen:	Recombinant fusion protein containing a sequence corresponding to amino acids 223-322 of human TMEM25 (NP_001137506.1).
Formulation:	Buffer: PBS with 0.02% sodium azide,50% glycerol,pH7.3.
Concentration:	lot specific
Purification:	Affinity purification
Conjugation:	Unconjugated
Storage:	Store at -20°C. Avoid freeze / thaw cycles.
Stability:	Shelf life: one year from despatch.
Predicted Protein Size:	23kDa/33kDa/34kDa/37kDa/39kDa
Gene Name:	transmembrane protein 25
Database Link:	Entrez Gene 84866 Human Q86YD3
Background:	In neurons, modulates the degradation of NMDA receptor GRIN2B subunit. Plays a role in the regulation of neuronal excitability.
Synonyms:	0610039J01Rik; FLJ14399

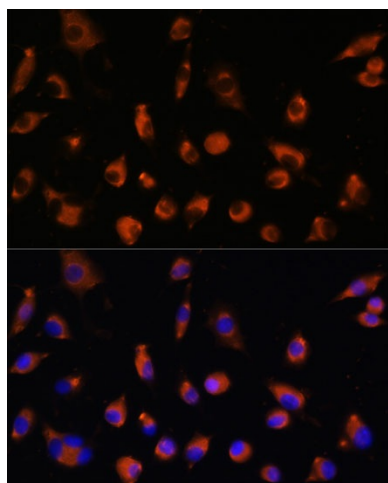


[View online »](#)

Product images:



Western blot analysis of extracts of various cell lines, using TMEM25 antibody (TA382607) at 1:3000 dilution. | Secondary antibody: HRP Goat Anti-Rabbit IgG (H+L) at 1:10000 dilution. | Lysates/proteins: 25ug per lane. | Blocking buffer: 3% nonfat dry milk in TBST. | Detection: ECL Basic Kit . | Exposure time: 30s.



Immunofluorescence analysis of L929 cells using TMEM25 antibody (TA382607) at dilution of 1:100. Blue: DAPI for nuclear staining.