

Product datasheet for **TA382605S**

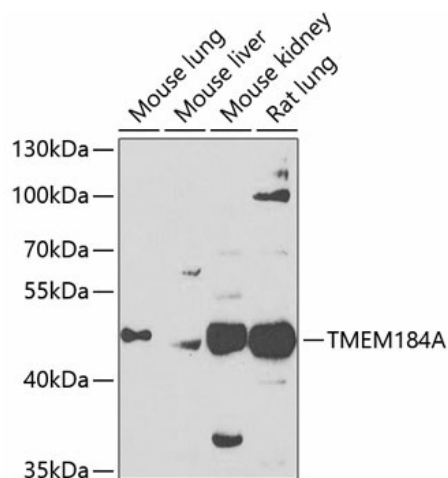
TMEM184A Rabbit Polyclonal Antibody

Product data:

Product Type:	Primary Antibodies
Applications:	ELISA, WB
Recommended Dilution:	WB, 1:500 - 1:2000 ELISA, Recommended starting concentration is 1 µg/mL. Please optimize the concentration based on your specific assay requirements.
Reactivity:	Mouse, Rat
Modifications:	Unmodified
Host:	Rabbit
Isotype:	IgG
Clonality:	Polyclonal
Formulation:	Buffer: PBS with 0.02% sodium azide, 50% glycerol, pH 7.3.
Concentration:	lot specific
Purification:	Affinity purification
Conjugation:	Unconjugated
Storage:	Store at -20°C. Avoid freeze / thaw cycles.
Stability:	Shelf life: one year from despatch.
Predicted Protein Size:	46kDa
Gene Name:	transmembrane protein 184A
Database Link:	Q6ZMB5
Background:	Predicted to enable heparin binding activity. Predicted to act upstream of or within germ-line sex determination; regulation of protein localization; and regulation of secretion. Predicted to be located in cytoplasmic vesicle; perinuclear region of cytoplasm; and plasma membrane. Predicted to be active in early endosome membrane. Predicted to be integral component of membrane.
Synonyms:	FLJ24011; MGC9712



[View online »](#)

Product images:


Western blot analysis of various lysates using TMEM184A Rabbit pAb (TA382605S) at 1:1000 dilution. Secondary antibody: HRP-conjugated Goat anti-Rabbit IgG (H+L) (AS014) at 1:10000 dilution. Lysates/proteins: 25µg per lane. Blocking buffer: 3% nonfat dry milk in TBST. Detection: ECL Enhanced Kit (RM00021). Exposure time: 90s.