

Product datasheet for **TA382600**

TMEM147 Rabbit Polyclonal Antibody

Product data:

Product Type:	Primary Antibodies
Applications:	WB
Recommended Dilution:	WB,1:500 - 1:2000
Reactivity:	Human, Mouse
Host:	Rabbit
Isotype:	IgG
Clonality:	Polyclonal
Immunogen:	A synthetic peptide of human TMEM147.
Formulation:	Buffer: PBS with 0.02% sodium azide,50% glycerol,pH7.3.
Concentration:	lot specific
Purification:	Affinity purification
Conjugation:	Unconjugated
Storage:	Store at -20°C. Avoid freeze / thaw cycles.
Stability:	Shelf life: one year from despatch.
Gene Name:	transmembrane protein 147
Database Link:	Entrez Gene 10430 Human Q9BVK8

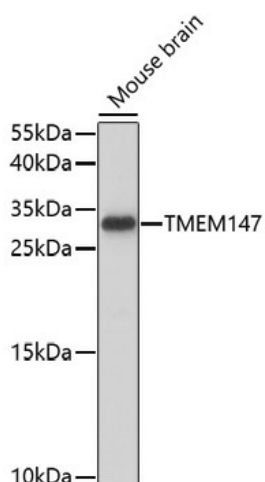
Background: Component of a ribosome-associated endoplasmic reticulum (ER translocon complex involved in multi-pass membrane protein transport into the ER membrane and biogenesis. Together with SEC61 and TMCO1, forms the lipid-filled cavity at the center of the translocon where TMEM147 may insert hydrophobic segments of mutli-pass membrane proteins from the lumen into de central membrane cavity in a process gated by SEC61, and TMCO1 may insert hydrophobic segments of nascent chains from the cytosol into the cavity. Acts as a negative regulator of CHRM3 function, most likely by interfering with its trafficking to the cell membrane. Negatively regulates CHRM3-mediated calcium mobilization and activation of RPS6KA1/p90RSK activity.

Synonyms: MGC1936; NIFIE14



[View online »](#)

Product images:



Western blot analysis of extracts of mouse brain, using TMEM147 antibody (TA382600) at 1:500 dilution. | Secondary antibody: HRP Goat Anti-Rabbit IgG (H+L) at 1:10000 dilution. | Lysates/proteins: 25ug per lane. | Blocking buffer: 3% nonfat dry milk in TBST. | Detection: ECL Enhanced Kit . | Exposure time: 300s.