

## Product datasheet for **TA382594**

### TMEM100 Rabbit Polyclonal Antibody

#### Product data:

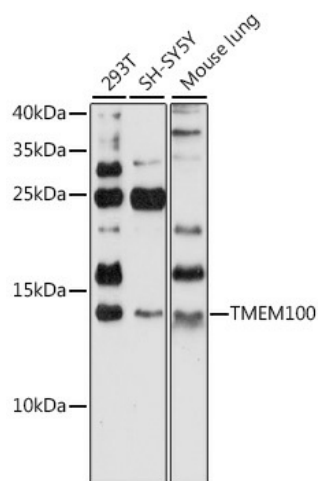
|                         |   |
|-------------------------|---|
| Product Type:           | Primary Antibodies  |
| Applications:           | WB  |
| Recommended Dilution:   | WB,1:500 - 1:2000   |
| Reactivity:             | Human, Mouse  |
| Modifications:          | Unmodified  |
| Host:                   | Rabbit  |
| Isotype:                | IgG   |
| Clonality:              | Polyclonal  |
| Immunogen:              | A synthetic peptide corresponding to a sequence within amino acids 50 to the C-terminus of human TMEM100 (NP_001093110.1).  |
| Formulation:            | Buffer: PBS with 0.02% sodium azide,50% glycerol,pH7.3.   |
| Concentration:          | lot specific  |
| Purification:           | Affinity purification   |
| Conjugation:            | Unconjugated  |
| Storage:                | Store at -20°C. Avoid freeze / thaw cycles.   |
| Stability:              | Shelf life: one year from despatch.   |
| Predicted Protein Size: | 14kDa   |
| Gene Name:              | transmembrane protein 100   |
| Database Link:          | <a href="#">Entrez Gene 55273 Human Q9NV29</a>  |
| Background:             | Plays a role during embryonic arterial endothelium differentiation and vascular morphogenesis through the ACVRL1 receptor-dependent signaling pathway upon stimulation by bone morphogenetic proteins, such as GDF2/BMP9 and BMP10. Involved in the regulation of nociception, acting as a modulator of the interaction between TRPA1 and TRPV1, two molecular sensors and mediators of pain signals in dorsal root ganglia (DRG neurons). Mechanistically, it weakens their interaction, thereby releasing the inhibition of TRPA1 by TRPV1 and increasing the single-channel open probability of the TRPA1-TRPV1 complex. |



[View online »](#)

Synonyms: FLJ10970; FLJ37856

### Product images:



Western blot analysis of extracts of various cell lines, using TMEM100 antibody (TA382594) at 1:1000 dilution. | Secondary antibody: HRP Goat Anti-Rabbit IgG (H+L) at 1:10000 dilution. | Lysates/proteins: 25ug per lane. | Blocking buffer: 3% nonfat dry milk in TBST. | Detection: ECL Basic Kit . | Exposure time: 90s.