

Product datasheet for **TA382585**

TMC1 Rabbit Polyclonal Antibody

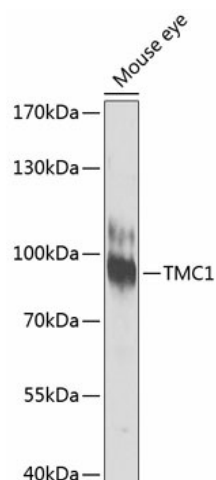
Product data:

Product Type:	Primary Antibodies
Applications:	IHC, WB
Recommended Dilution:	WB,1:500 - 1:2000 IHC,1:50 - 1:200
Reactivity:	Human, Mouse, Rat
Modifications:	Unmodified
Host:	Rabbit
Isotype:	IgG
Clonality:	Polyclonal
Immunogen:	A synthetic peptide corresponding to a sequence within amino acids 600-700 of human TMC1 (NP_619636.2).
Formulation:	Buffer: PBS with 0.02% sodium azide,50% glycerol,pH7.3.
Concentration:	lot specific
Purification:	Affinity purification
Conjugation:	Unconjugated
Storage:	Store at -20°C. Avoid freeze / thaw cycles.
Stability:	Shelf life: one year from despatch.
Predicted Protein Size:	87kDa
Gene Name:	transmembrane channel like 1
Database Link:	Entrez Gene 117531 Human Q8TDI8
Background:	This gene is considered a member of a gene family predicted to encode transmembrane proteins. The specific function of this gene is unknown; however, it is known to be required for normal function of cochlear hair cells. Mutations in this gene have been associated with progressive postlingual hearing loss and profound prelingual deafness.
Synonyms:	DFNA36; DFNB7; DFNB11; OTTHUMP00000021473



[View online »](#)

Product images:



Western blot analysis of extracts of mouse eye, using TMC1 antibody (TA382585) at 1:1000 dilution. Secondary antibody: HRP Goat Anti-Rabbit IgG (H+L) at 1:10000 dilution. Lysates/proteins: 25ug per lane. Blocking buffer: 3% nonfat dry milk in TBST. Detection: ECL Enhanced Kit. Exposure time: 90s.