

## Product datasheet for **TA382578**

### TM6SF2 Rabbit Polyclonal Antibody

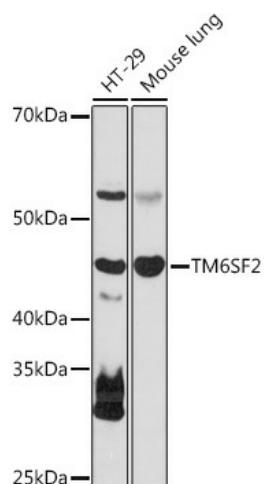
#### Product data:

Product Type:	Primary Antibodies
Applications:	WB
Recommended Dilution:	WB,1:500 - 1:2000
Reactivity:	Human, Mouse
Host:	Rabbit
Isotype:	IgG
Clonality:	Polyclonal
Immunogen:	Recombinant protein of human TM6SF2.
Formulation:	Buffer: PBS with 0.02% sodium azide,50% glycerol,pH7.3.
Concentration:	lot specific
Purification:	Affinity purification
Conjugation:	Unconjugated
Storage:	Store at -20°C. Avoid freeze / thaw cycles.
Stability:	Shelf life: one year from despatch.
Gene Name:	transmembrane 6 superfamily member 2
Database Link:	<a href="#">Entrez Gene 53345 Human</a> <a href="#">Q9BZW4</a>
Background:	Regulator of liver fat metabolism influencing triglyceride secretion and hepatic lipid droplet content. May function as sterol isomerase.
Synonyms:	KIAA1926; Lpr4



[View online »](#)

## Product images:



Western blot analysis of extracts of various cell lines, using TM6SF2 antibody (TA382578) at 1:1000 dilution. | Secondary antibody: HRP Goat Anti-Rabbit IgG (H+L) at 1:10000 dilution. | Lysates/proteins: 25ug per lane. | Blocking buffer: 3% nonfat dry milk in TBST. | Detection: ECL Basic Kit . | Exposure time: 90s.