

Product datasheet for **TA382577S**

TM4SF19 Rabbit Polyclonal Antibody

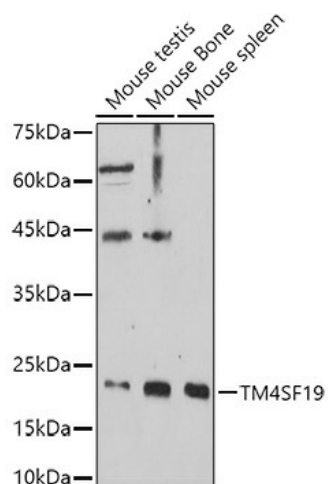
Product data:

Product Type:	Primary Antibodies
Applications:	WB
Recommended Dilution:	WB,1:500 - 1:2000
Reactivity:	Human, Mouse
Modifications:	Unmodified
Host:	Rabbit
Isotype:	IgG
Clonality:	Polyclonal
Immunogen:	A synthetic peptide corresponding to a sequence within amino acids 50-150 of human TM4SF19 (NP_001191827.1).
Formulation:	PBS with 0.05% proclin300,50% glycerol,pH7.3.
Concentration:	lot specific
Purification:	Affinity purification
Conjugation:	Unconjugated
Storage:	Store at -20°C. Avoid freeze / thaw cycles.
Stability:	Shelf life: one year from despatch.
Predicted Protein Size:	22kDa
Gene Name:	transmembrane 4 L six family member 19
Database Link:	Entrez Gene 116211 Human Q96DZ7
Background:	The protein encoded by this gene is a member of the four-transmembrane L6 superfamily. Members of this family function in various cellular processes including cell proliferation, motility, and adhesion via their interactions with integrins. In human brain tissue, this gene is expressed at high levels in the parietal lobe, occipital lobe, hippocampus, pons, white matter, corpus callosum, and cerebellum. Alternative splicing results in multiple transcript variants encoding different isoforms.
Synonyms:	OCTM4; OTTHUMP00000208460



[View online »](#)

Product images:



Western blot analysis of extracts of various cell lines, using TM4SF19 antibody ([TA382577]) at 1:1000 dilution. | Secondary antibody: HRP Goat Anti-Rabbit IgG (H+L) at 1:10000 dilution. | Lysates/proteins: 25ug per lane. | Blocking buffer: 3% nonfat dry milk in TBST. | Detection: ECL Enhanced Kit . | Exposure time: 180s.